

Product datasheet for **TA308409**

Prolactin Receptor (PRLR) Rabbit Polyclonal Antibody

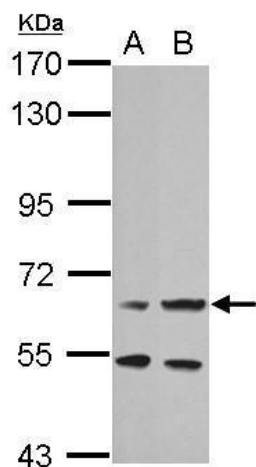
Product data:

Product Type:	Primary Antibodies
Applications:	WB
Recommended Dilution:	WB:1:500-1:3000
Reactivity:	Human
Host:	Rabbit
Isotype:	IgG
Clonality:	Polyclonal
Immunogen:	Recombinant fragment corresponding to a region within amino acids 1 and 271 of Prolactin Receptor (Uniprot ID#P16471)
Formulation:	0.1M Tris, 0.1M Glycine, 10% Glycerol (pH7). 0.01% Thimerosal was added as a preservative.
Concentration:	lot specific
Purification:	Purified by antigen-affinity chromatography.
Conjugation:	Unconjugated
Storage:	Store at -20°C as received.
Stability:	Stable for 12 months from date of receipt.
Predicted Protein Size:	70 kDa
Gene Name:	prolactin receptor
Database Link:	NP_000940 Entrez Gene 5618 Human P16471
Synonyms:	HPRL; hPRLrI; MFAB
Protein Families:	Druggable Genome, Transmembrane
Protein Pathways:	Cytokine-cytokine receptor interaction, Jak-STAT signaling pathway, Neuroactive ligand-receptor interaction



[View online »](#)

Product images:



Sample (30 ug of whole cell lysate). A: 293T. B: HeLa. 7.5% SDS PAGE. TA308409 diluted at 1:1000.