

Product datasheet for **TA308408**

RALA Rabbit Polyclonal Antibody

Product data:

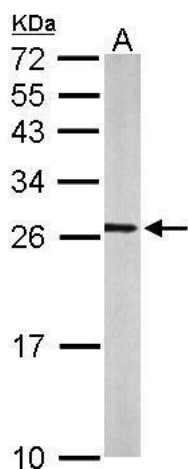
Product Type:	Primary Antibodies
Applications:	WB
Recommended Dilution:	WB:1:500-1:3000
Reactivity:	Human, Mouse (Predicted: Rhesus Monkey)
Host:	Rabbit
Isotype:	IgG
Clonality:	Polyclonal
Immunogen:	Recombinant fragment corresponding to a region within amino acids 1 and 206 of RALA (Uniprot ID#P11233)
Formulation:	0.1M Tris, 0.1M Glycine, 20% Glycerol (pH7). 0.01% Thimerosal was added as a preservative.
Concentration:	lot specific
Purification:	Purified by antigen-affinity chromatography.
Conjugation:	Unconjugated
Storage:	Store at -20°C as received.
Stability:	Stable for 12 months from date of receipt.
Predicted Protein Size:	24 kDa
Gene Name:	RALA Ras like proto-oncogene A
Database Link:	NP_005393 Entrez Gene 56044 Mouse Entrez Gene 5898 Human P11233
Background:	The product of this gene belongs to the small GTPase superfamily, Ras family of proteins. GTP-binding proteins mediate the transmembrane signaling initiated by the occupancy of certain cell surface receptors. This gene encodes a low molecular mass ras-like GTP-binding protein that shares about 50% similarity with other ras proteins. [provided by RefSeq]
Synonyms:	RAL
Note:	Seq homology of immunogen across species: Rhesus Monkey (100%)
Protein Families:	Druggable Genome



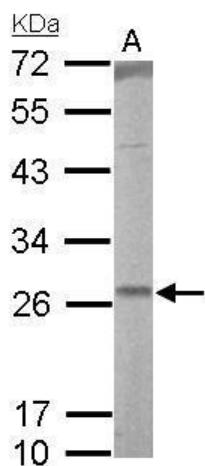
[View online »](#)

Protein Pathways: Pancreatic cancer, Pathways in cancer

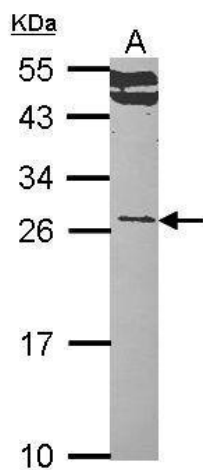
Product images:



Sample (50 ug of whole cell lysate). A: mouse brain. 12% SDS PAGE. TA308408 diluted at 1:500.



RALA antibody detects RALA protein by Western blot analysis. A. 50 ug rat lung lysate/extract. 12 % SDS-PAGE. RALA antibody (TA308408) dilution: 1:1000



Sample (30 ug of whole cell lysate). A: Hep G2.
12% SDS PAGE. RALA antibody. TA308408 diluted
at 1:1000.