

## Product datasheet for **TA308407**

### ACTL8 Rabbit Polyclonal Antibody

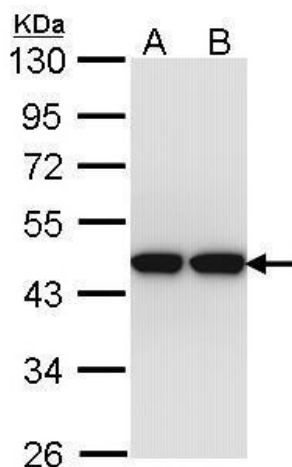
#### Product data:

Product Type:	Primary Antibodies
Applications:	IF, IHC, WB
Recommended Dilution:	ICC/IF:1:100-1:1000; IHC:1:100-1:1000; WB:1:500-1:3000
Reactivity:	Human
Host:	Rabbit
Isotype:	IgG
Clonality:	Polyclonal
Immunogen:	Recombinant fragment corresponding to a region within amino acids 156 and 366 of ACTL8 (Uniprot ID#Q9H568)
Formulation:	0.1M Tris, 0.1M Glycine, 10% Glycerol (pH7). 0.01% Thimerosal was added as a preservative.
Concentration:	lot specific
Purification:	Purified by antigen-affinity chromatography.
Conjugation:	Unconjugated
Storage:	Store at -20°C as received.
Stability:	Stable for 12 months from date of receipt.
Predicted Protein Size:	41 kDa
Gene Name:	actin like 8
Database Link:	<a href="#">NP_110439</a> <a href="#">Entrez Gene 81569 Human</a> <a href="#">Q9H568</a>
Synonyms:	CT57

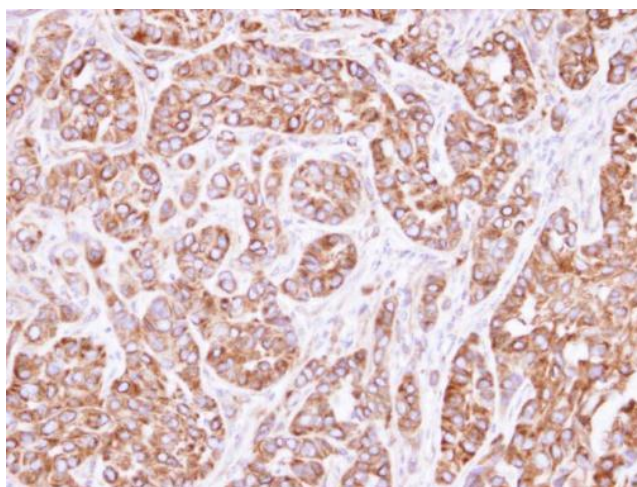


[View online »](#)

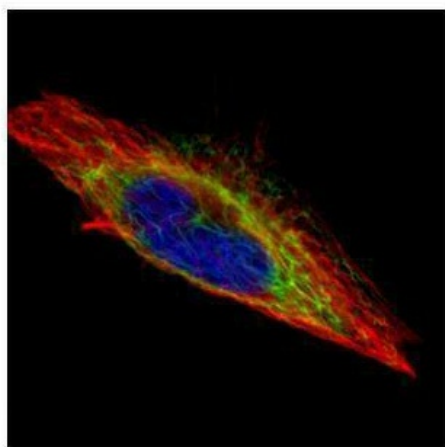
## Product images:



Sample (30 ug of whole cell lysate). A: Hep G2. B: Molt-4. 10% SDS PAGE. TA308407 diluted at 1:1000.



Immunohistochemical analysis of paraffin-embedded A549 xenograft, using ACTL8 (TA308407) antibody at 1:500 dilution.



Confocal immunofluorescence analysis (Olympus FV10i) of methanol-fixed HeLa, using ACTL8 (TA308407) antibody (Green) at 1:500 dilution. Alpha-tubulin filaments were labeled with anti-alpha tubulin antibody (Red) at 1:2000.