

Product datasheet for **TA308404**

PHKA1 Rabbit Polyclonal Antibody

Product data:

Product Type:	Primary Antibodies
Applications:	IF, IHC, WB
Recommended Dilution:	ICC/IF:1:100-1:1000; IHC:1:100-1:1000; WB:1:500-1:3000
Reactivity:	Human (Predicted: Mouse, Rat)
Host:	Rabbit
Isotype:	IgG
Clonality:	Polyclonal
Immunogen:	Recombinant fragment corresponding to a region within amino acids 828 and 1062 of PHKA1 (Uniprot ID#P46020)
Formulation:	0.1M Tris, 0.1M Glycine, 10% Glycerol (pH7). 0.01% Thimerosal was added as a preservative.
Concentration:	lot specific
Purification:	Purified by antigen-affinity chromatography.
Conjugation:	Unconjugated
Storage:	Store at -20°C as received.
Stability:	Stable for 12 months from date of receipt.
Predicted Protein Size:	137 kDa
Gene Name:	phosphorylase kinase regulatory subunit alpha 1
Database Link:	NP_001116142 Entrez Gene 18679 Mouse Entrez Gene 64561 Rat Entrez Gene 5255 Human P46020
Background:	The PHKA1 gene encodes the alpha subunit of muscle phosphorylase kinase (EC 2.7.1.38), a key regulatory enzyme of glycogen metabolism. Phosphorylase kinase consists of 4 copies of an alpha-beta-gamma-delta tetramer. The alpha, beta (PHKB; MIM 172490), and gamma (PHKG1; MIM 172470 and PHKG2; MIM 172471) subunits have several isoforms; the delta subunit is calmodulin (CALM1; MIM 114180). PHKA2 (MIM 306000) encodes the alpha subunit of liver-specific phosphorylase kinase and is also located on the X chromosome. [supplied by OMIM]
Synonyms:	PHKA



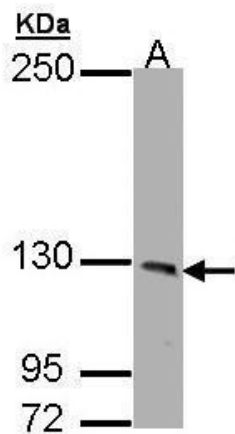
[View online »](#)

Note: Seq homology of immunogen across species: Mouse (96%), Rat (95%)

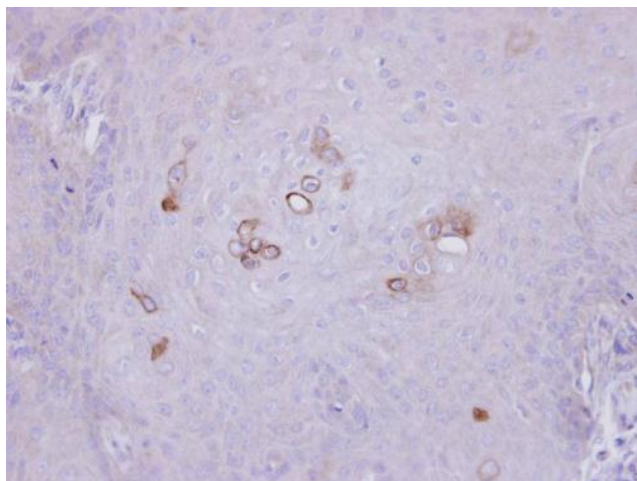
Protein Families: Druggable Genome

Protein Pathways: Calcium signaling pathway, Insulin signaling pathway

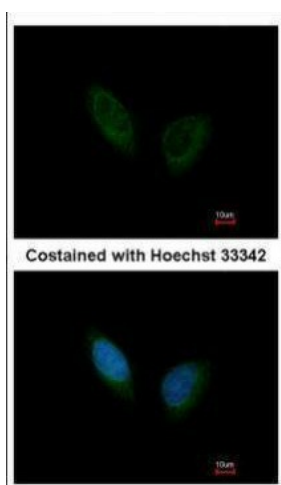
Product images:



Sample (30 ug of whole cell lysate). A: HeLa. 7.5% SDS PAGE. TA308404 diluted at 1:1000



Immunohistochemical analysis of paraffin-embedded Cal27 xenograft, using PHKA1 (TA308404) antibody at 1:500 dilution.



Immunofluorescence analysis of methanol-fixed HeLa, using PHKA1 (TA308404) antibody at 1:200 dilution.