

## Product datasheet for **TA308402**

### PCCB Rabbit Polyclonal Antibody

#### Product data:

Product Type:	Primary Antibodies
Applications:	IF, IHC, WB
Recommended Dilution:	ICC/IF:1:100-1:1000; IHC:1:100-1:1000; WB:1:500-1:3000
Reactivity:	Human (Predicted: Mouse, Pig, Rat, Xenopus, Zebrafish, Bovine)
Host:	Rabbit
Isotype:	IgG
Clonality:	Polyclonal
Immunogen:	Recombinant fragment corresponding to a region within amino acids 167 and 480 of PCCB (Uniprot ID#P05166)
Formulation:	0.1M Tris, 0.1M Glycine, 10% Glycerol (pH7). 0.01% Thimerosal was added as a preservative.
Concentration:	lot specific
Purification:	Purified by antigen-affinity chromatography.
Conjugation:	Unconjugated
Storage:	Store at -20°C as received.
Stability:	Stable for 12 months from date of receipt.
Predicted Protein Size:	58 kDa
Gene Name:	propionyl-CoA carboxylase beta subunit
Database Link:	<a href="#">NP_000523</a> <a href="#">Entrez Gene 24624 Rat</a> <a href="#">Entrez Gene 66904 Mouse</a> <a href="#">Entrez Gene 5096 Human</a> <a href="#">P05166</a>
Background:	The protein encoded by this gene is a subunit of the propionyl-CoA carboxylase (PCC) enzyme, which is involved in the catabolism of propionyl-CoA. PCC is a mitochondrial enzyme that probably acts as a dodecamer of six alpha subunits and six beta subunits. This gene encodes the beta subunit of PCC. Defects in this gene are a cause of propionic acidemia type II (PA-2). [provided by RefSeq]
Synonyms:	DKFZp451E113



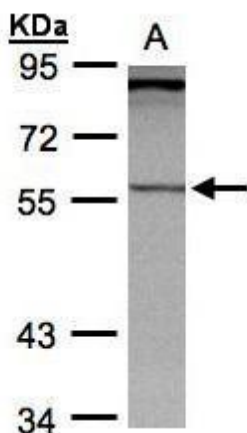
[View online »](#)

**Note:** Seq homology of immunogen across species: Mouse (92%), Pig (94%), Rat (91%), Xenopus laevis (90%), Zebrafish (90%), Bovine (97%)

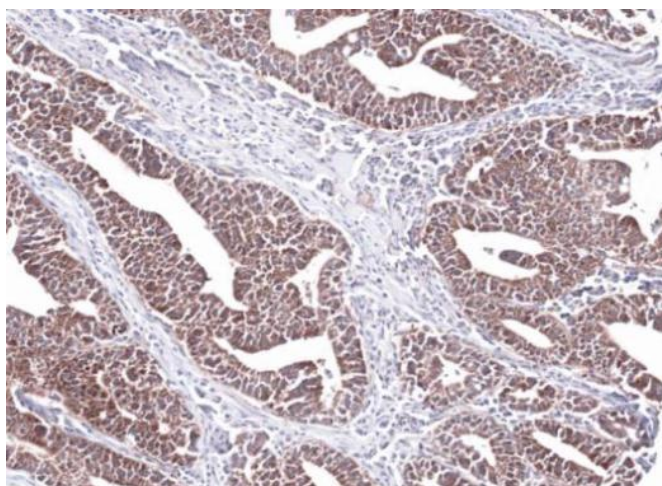
**Protein Families:** Druggable Genome

**Protein Pathways:** Metabolic pathways, Propanoate metabolism, Valine, leucine and isoleucine degradation

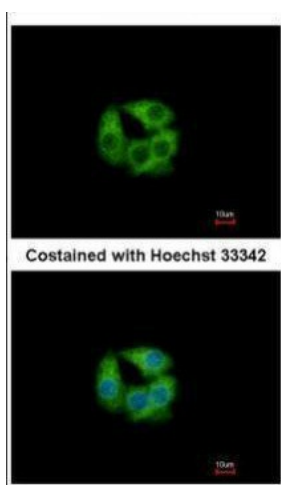
**Product images:**



Sample (30ug whole cell lysate). A: Hep G2. 7.5% SDS PAGE. TA308402 diluted at 1:1000



Immunohistochemical analysis of paraffin-embedded Lung Ad Cancer PC14 xenograft, using PCCB (TA308402 ) antibody at 1:100 dilution.



Immunofluorescence analysis of methanol-fixed Hep G2, using PCCB (TA308402) antibody at 1:500 dilution.