

Product datasheet for **TA308401**

RED (IK) Rabbit Polyclonal Antibody

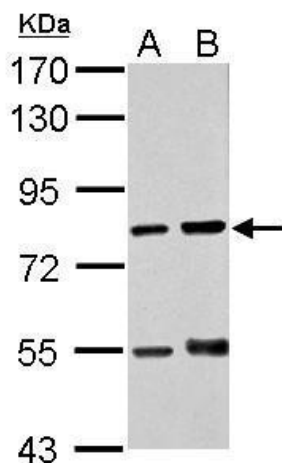
Product data:

Product Type:	Primary Antibodies
Applications:	IF, IHC, WB
Recommended Dilution:	ICC/IF:1:100-1:1000; IHC:1:100-1:1000; WB:1:500-1:3000
Reactivity:	Human (Predicted: Rat, Chicken, Bovine, Rhesus Monkey, Mouse)
Host:	Rabbit
Isotype:	IgG
Clonality:	Polyclonal
Immunogen:	Synthetic peptide corresponding to a region within amino acids 1 and 45 of RED (Uniprot ID#Q13123)
Formulation:	0.1M Tris, 0.1M Glycine, 10% Glycerol (pH7). 0.01% Thimerosal was added as a preservative.
Purification:	Purified by antigen-affinity chromatography.
Conjugation:	Unconjugated
Storage:	Store at -20°C as received.
Stability:	Stable for 12 months from date of receipt.
Predicted Protein Size:	66 kDa
Gene Name:	IK cytokine, down-regulator of HLA II
Database Link:	NP_006074 Entrez Gene 24010 Mouse Entrez Gene 291659 Rat Entrez Gene 3550 Human Q13123
Background:	The protein encoded by this gene was identified by its RED repeat, a stretch of repeated arginine, glutamic acid and aspartic acid residues. The protein localizes to discrete dots within the nucleus, excluding the nucleolus. Its function is unknown. This gene maps to chromosome 5; however, a pseudogene may exist on chromosome 2. [provided by RefSeq]
Synonyms:	CSA2; RED; RER
Note:	Seq homology of immunogen across species: Mouse (100%), Rat (100%), Chicken (93%), Rhesus Monkey (100%), Bovine (100%)
Protein Families:	Druggable Genome

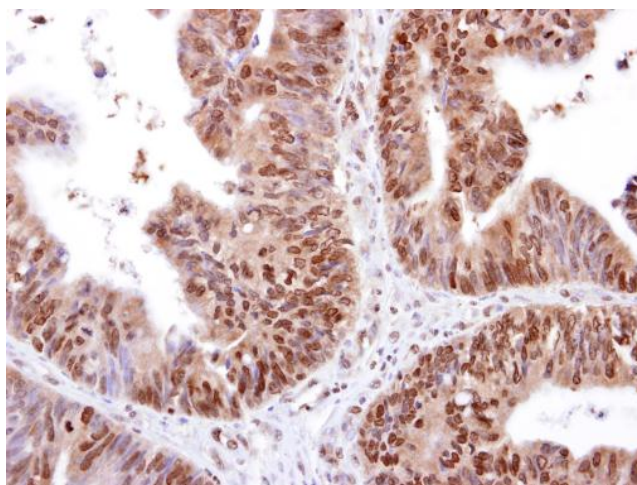


[View online »](#)

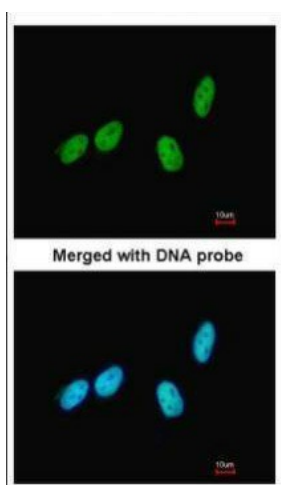
Product images:



Sample (30 ug of whole cell lysate). A: THP-1. B: HL-60. 7.5% SDS PAGE. TA308401 diluted at 1:1000.



RED antibody [N1], N-term detects RED protein at cytosol and nucleus on human colon carcinoma by immunohistochemical analysis. Sample: RED antibody [N1], N-term (TA308401) dilution: 1:250.



Immunofluorescence analysis of paraformaldehyde-fixed HeLa, using RED (TA308401) antibody at 1:200 dilution.