

Product datasheet for **TA308398**

BZW2 Rabbit Polyclonal Antibody

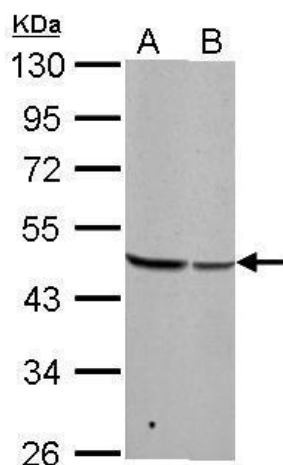
Product data:

| | |
|-------------------------|---|
| Product Type: | Primary Antibodies |
| Applications: | IF, IHC, WB |
| Recommended Dilution: | ICC/IF:1:100-1:1000; IHC:1:100-1:1000; WB:1:500-1:3000 |
| Reactivity: | Human (Predicted: Rhesus Monkey) |
| Host: | Rabbit |
| Isotype: | IgG |
| Clonality: | Polyclonal |
| Immunogen: | Recombinant fragment corresponding to a region within amino acids 1 and 238 of BZW2 (Uniprot ID#Q9Y6E2) |
| Formulation: | 0.1M Tris, 0.1M Glycine, 10% Glycerol (pH7). 0.01% Thimerosal was added as a preservative. |
| Concentration: | lot specific |
| Purification: | Purified by antigen-affinity chromatography. |
| Conjugation: | Unconjugated |
| Storage: | Store at -20°C as received. |
| Stability: | Stable for 12 months from date of receipt. |
| Predicted Protein Size: | 48 kDa |
| Gene Name: | basic leucine zipper and W2 domains 2 |
| Database Link: | NP_054757 Entrez Gene 28969 Human Q9Y6E2 |
| Synonyms: | HSPC028; MST017; MSTP017 |
| Note: | Seq homology of immunogen across species: Rhesus Monkey (100%) |

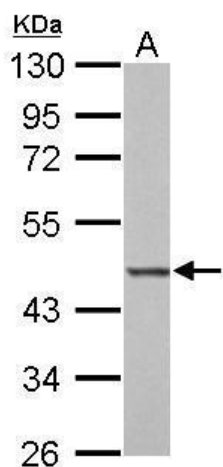


[View online »](#)

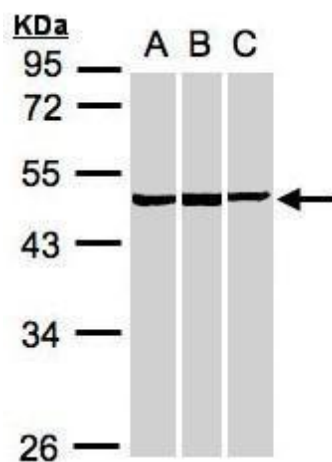
Product images:



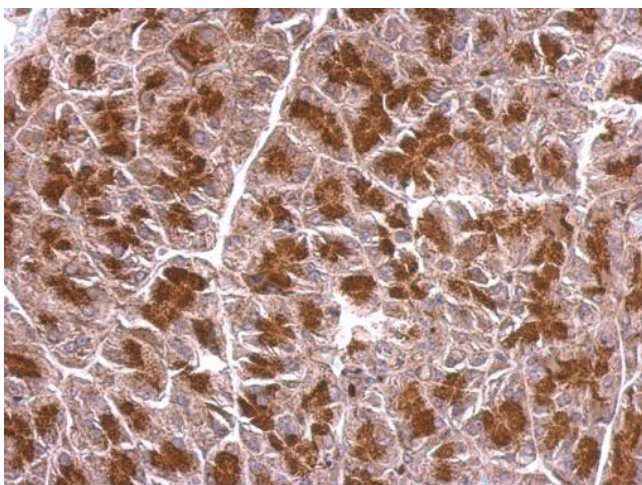
BZW2 antibody detects BZW2 protein by Western blot analysis. A. 30 ug Neuro2A whole cell lysate/extract. B. 30 ug C8D30 whole cell lysate/extract. 10 % SDS-PAGE. BZW2 antibody (TA308398) dilution: 1:1000



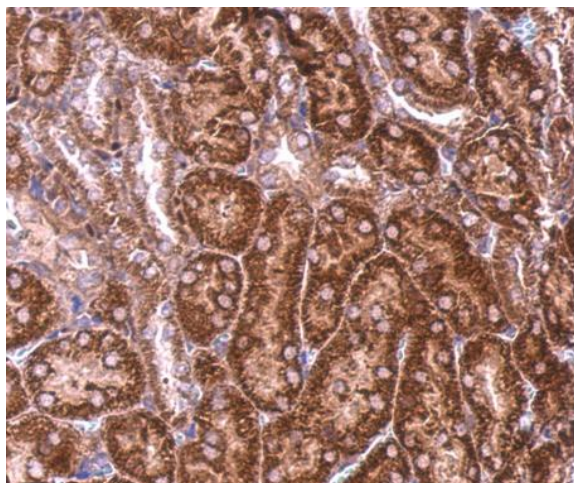
BZW2 antibody detects BZW2 protein by Western blot analysis. A. 30 ug Rat2 whole cell lysate/extract. 10 % SDS-PAGE. BZW2 antibody (TA308398) dilution: 1:1000



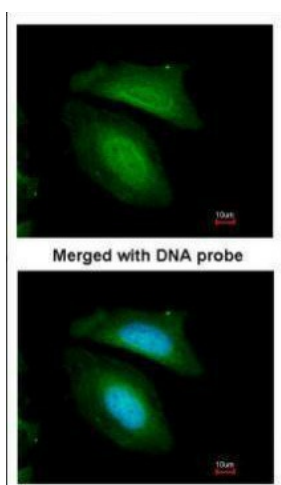
Sample (30 ug whole cell lysate). A:A431. B:HeLa S3. C:MOLT4. 10% SDS PAGE. TA308398 diluted at 1:1000



BZW2 antibody detects BZW2 protein at cytosol on mouse pancreas by immunohistochemical analysis. Sample: Paraffin-embedded mouse pancreas. BZW2 antibody (TA308398) dilution: 1:500.



BZW2 antibody detects BZW2 protein at cytosol on mouse kidney by immunohistochemical analysis. Sample: Paraffin-embedded mouse kidney. BZW2 antibody (TA308398) dilution: 1:500.



Immunofluorescence analysis of paraformaldehyde-fixed HeLa, using BZW2 (TA308398) antibody at 1:200 dilution.