

Product datasheet for **TA308397**

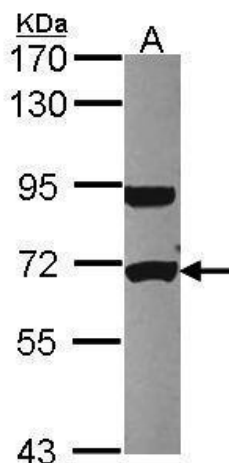
UTP6 Rabbit Polyclonal Antibody

Product data:

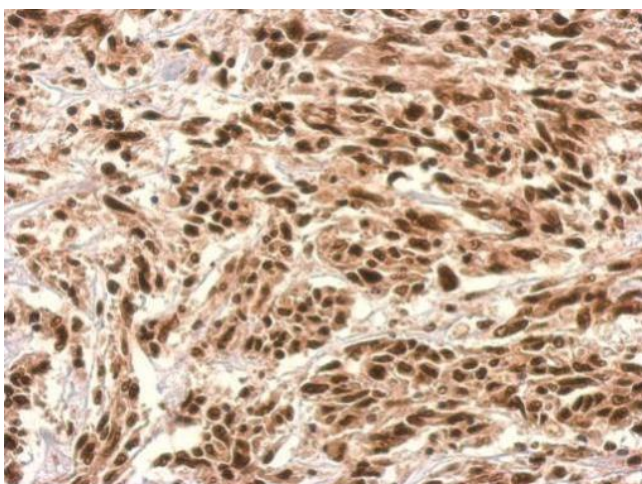
Product Type:	Primary Antibodies
Applications:	IF, IHC, WB
Recommended Dilution:	ICC/IF:1:100-1:1000; IHC:1:100-1:1000; WB:1:500-1:3000
Reactivity:	Human
Host:	Rabbit
Isotype:	IgG
Clonality:	Polyclonal
Immunogen:	Recombinant fragment corresponding to a region within amino acids 213 and 597 of UTP6 (Uniprot ID#Q9NYH9)
Formulation:	0.1M Tris, 0.1M Glycine, 10% Glycerol (pH7). 0.01% Thimerosal was added as a preservative.
Concentration:	lot specific
Purification:	Purified by antigen-affinity chromatography.
Conjugation:	Unconjugated
Storage:	Store at -20°C as received.
Stability:	Stable for 12 months from date of receipt.
Predicted Protein Size:	70 kDa
Gene Name:	UTP6, small subunit processome component
Database Link:	NP_060898 Entrez Gene 55813 Human Q9NYH9
Synonyms:	C17orf40; HCA66

[View online »](#)

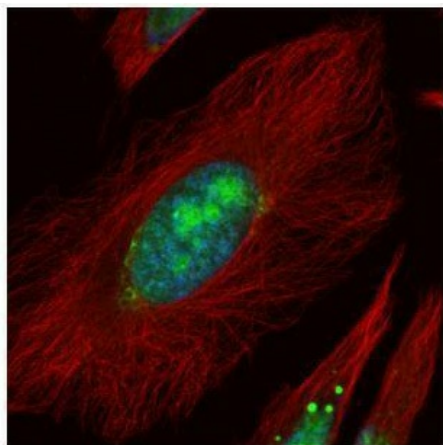
Product images:



Sample (30 ug of whole cell lysate). A: HCT116. 7.5% SDS PAGE. TA308397 diluted at 1:1000.



UTP6 antibody detects UTP6 protein at nucleus on U251 xenograft by immunohistochemical analysis. Sample: Paraffin-embedded U251 xenograft. UTP6 antibody (TA308397) dilution: 1:500.



Confocal immunofluorescence analysis (Olympus FV10i) of paraformaldehyde-fixed HeLa, using UTP6 (TA308397) antibody (green) at 1:500 dilution. Alpha-tubulin filaments were labeled with anti-alpha tubulin antibody (red) at 1:2500.