

Product datasheet for **TA308395**

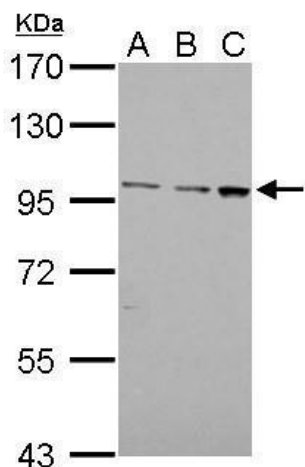
ADGRE1 Rabbit Polyclonal Antibody

Product data:

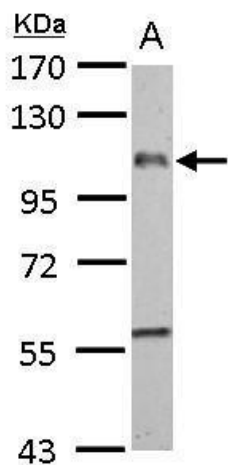
Product Type:	Primary Antibodies
Applications:	IHC, WB
Recommended Dilution:	IHC:1:100-1:1000; WB:1:500-1:3000
Reactivity:	Human
Host:	Rabbit
Isotype:	IgG
Clonality:	Polyclonal
Immunogen:	Recombinant fragment corresponding to a region within amino acids 626 and 886 of EMR1 (Uniprot ID#Q14246)
Formulation:	1XPBS, 1% BSA, 20% Glycerol (pH7). 0.025% ProClin 300 was added as a preservative.
Purification:	Purified by antigen-affinity chromatography.
Conjugation:	Unconjugated
Storage:	Store at -20°C as received.
Stability:	Stable for 12 months from date of receipt.
Predicted Protein Size:	98 kDa
Gene Name:	adhesion G protein-coupled receptor E1
Database Link:	NP_001965 Entrez Gene 2015 Human Q14246
Background:	This gene encodes a protein that has a domain resembling seven transmembrane G protein-coupled hormone receptors (7TM receptors) at its C-terminus. The N-terminus of the encoded protein has six EGF-like modules, separated from the transmembrane segments by a serine/threonine-rich domain, a feature reminiscent of mucin-like, single-span, integral membrane glycoproteins with adhesive properties. [provided by RefSeq]
Synonyms:	EMR1; TM7LN3
Protein Families:	Druggable Genome, Transmembrane



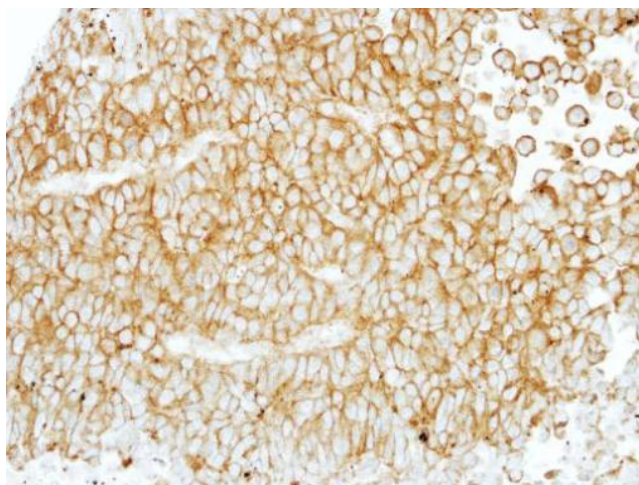
[View online »](#)

Product images:


EMR1 antibody [C2C3], C-term detects EMR1 protein by Western blot analysis. A. 30 ug Jurkat whole cell lysate/extract. B. 30 ug Raji whole cell lysate/extract. C. 30 ug K562 whole cell lysate/extract. 7.5 % SDS-PAGE. EMR1 antibody [C2C3], C-term (TA308395)



EMR1 antibody [C2C3], C-term detects EMR1 protein by Western blot analysis. A. 50 ug rat liver lysate/extract. 7.5 % SDS-PAGE. EMR1 antibody [C2C3], C-term (TA308395) dilution: 1:1000



Immunohistochemical analysis of paraffin-embedded PC13 xenograft, using EMR1 (TA308395) antibody at 1:100 dilution.