

Product datasheet for **TA308393**

STAR Rabbit Polyclonal Antibody

Product data:

Product Type:	Primary Antibodies
Applications:	IF, IHC, WB
Recommended Dilution:	ICC/IF:1:100-1:1000; IHC:1:100-1:1000; WB:1:500-1:3000
Reactivity:	Human, Mouse (Predicted: Feline, Dog, Pig, Bovine)
Host:	Rabbit
Isotype:	IgG
Clonality:	Polyclonal
Immunogen:	Recombinant fragment corresponding to a region within amino acids 15 and 268 of STAR (Uniprot ID#P49675)
Formulation:	1XPBS, 20% Glycerol (pH7). 0.025% ProClin 300 was added as a preservative.
Concentration:	lot specific
Purification:	Purified by antigen-affinity chromatography.
Conjugation:	Unconjugated
Storage:	Store at -20°C as received.
Stability:	Stable for 12 months from date of receipt.
Predicted Protein Size:	32 kDa
Gene Name:	steroidogenic acute regulatory protein
Database Link:	NP_001007244 Entrez Gene 20845 Mouse Entrez Gene 475588 Dog Entrez Gene 6770 Human P49675

Background: The protein encoded by this gene plays a key role in the acute regulation of steroid hormone synthesis by enhancing the conversion of cholesterol into pregnenolone. This protein permits the cleavage of cholesterol into pregnenolone by mediating the transport of cholesterol from the outer mitochondrial membrane to the inner mitochondrial membrane. Mutations in this gene are a cause of congenital lipid adrenal hyperplasia (CLAH), also called lipid CAH. A pseudogene of this gene is located on chromosome 13. [provided by RefSeq]



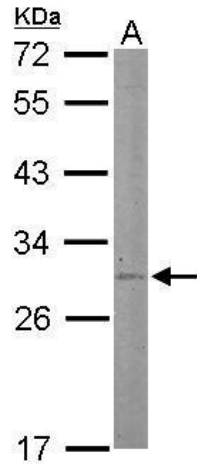
[View online »](#)

Synonyms: cholesterol trafficker; mitochondrial steroid acute regulatory protein; StAR-related lipid transfer (START) domain containing 1; STARD1; START domain containing 1; steroid acute regulatory protein; steroidogenic acute regula; steroidogenic acute regulator

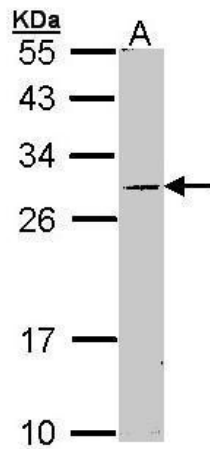
Note: Seq homology of immunogen across species: Cat (89%), Dog (93%), Pig (90%), Bovine (87%)

Protein Families: Druggable Genome

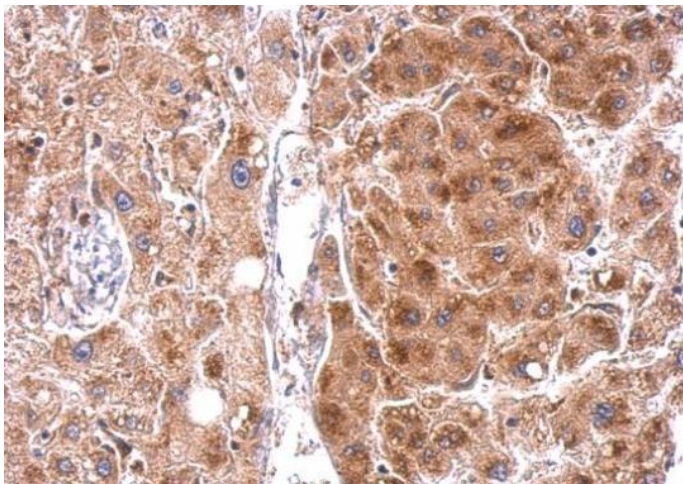
Product images:



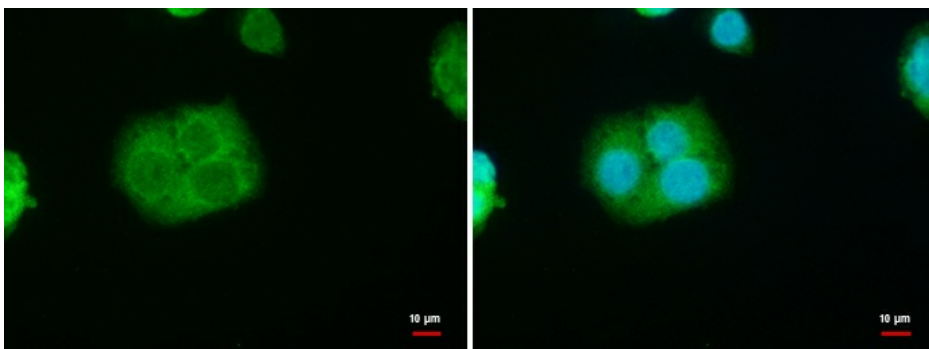
Sample (50 ug of whole cell lysate). A: Mouse liver. 12% SDS PAGE. TA308393 diluted at 1:500.



Sample (30 ug of whole cell lysate). A: Molt-4. 12% SDS PAGE. TA308393 diluted at 1:1000.



STAR antibody detects STAR protein at cytosol on hepatoma by immunohistochemical analysis. Sample: Paraffin-embedded hepatoma. STAR antibody (TA308393) dilution: 1:500.



STAR antibody detects STAR protein at mitochondria by immunofluorescent analysis. Sample: HepG2 cells were fixed in 4% paraformaldehyde at RT for 15 min. Green: STAR protein stained by STAR antibody (TA308393) diluted at 1:500. Blue: Hoechst 33342 stainin