

## Product datasheet for **TA308390**

### NSL1 Rabbit Polyclonal Antibody

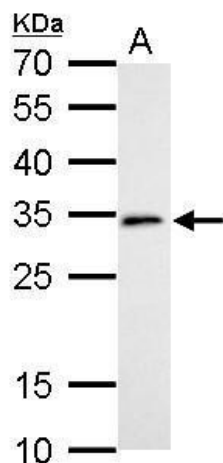
#### Product data:

Product Type:	Primary Antibodies
Applications:	IF, WB
Recommended Dilution:	ICC/IF:1:100-1:1000; WB:1:500-1:3000
Reactivity:	Human
Host:	Rabbit
Isotype:	IgG
Clonality:	Polyclonal
Immunogen:	Recombinant fragment corresponding to a region within amino acids 1 and 275 of DC8 (Uniprot ID#Q96IY1)
Formulation:	0.1M Tris, 0.1M Glycine, 10% Glycerol (pH7). 0.01% Thimerosal was added as a preservative.
Concentration:	lot specific
Purification:	Purified by antigen-affinity chromatography.
Conjugation:	Unconjugated
Storage:	Store at -20°C as received.
Stability:	Stable for 12 months from date of receipt.
Predicted Protein Size:	32 kDa
Gene Name:	NSL1, MIS12 kinetochore complex component
Database Link:	<a href="#">NP_001036014</a> <a href="#">Entrez Gene 25936 Human</a> <a href="#">Q96IY1</a>
Background:	This gene encodes a protein with two coiled-coil domains that localizes to kinetochores, which are chromosome-associated structures that attach to microtubules and mediate chromosome movements during cell division. The encoded protein is part of a conserved protein complex that includes two chromodomain-containing proteins and a component of the outer plate of the kinetochore. This protein complex is proposed to bridge centromeric heterochromatin with the outer kinetochore structure. Multiple transcript variants encoding different isoforms have been found for this gene. [provided by RefSeq]
Synonyms:	C1orf48; DC8; MIS14

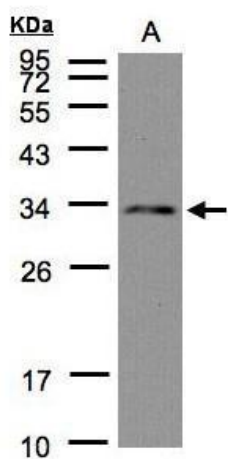


[View online »](#)

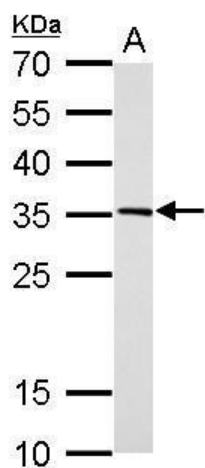
## Product images:



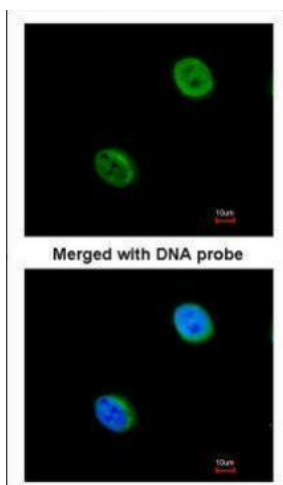
DC8 antibody detects NSL1 protein by Western blot analysis. A. 30 ug C8D30 whole cell lysate/extract. 12 % SDS-PAGE. DC8 antibody (TA308390) dilution: 1:1000



Sample (30 ug of whole cell lysate). A: Hep G2. 12% SDS PAGE. TA308390 diluted at 1:1000



DC8 antibody detects NSL1 protein by Western blot analysis. A. 30 ug Rat2 whole cell lysate/extract. 12 % SDS-PAGE. DC8 antibody (TA308390) dilution: 1:1000



Immunofluorescence analysis of paraformaldehyde-fixed HeLa, using DC8 (TA308390) antibody at 1:200 dilution.