

## Product datasheet for **TA308389**

### Coatomer subunit delta (ARCN1) Rabbit Polyclonal Antibody

#### Product data:

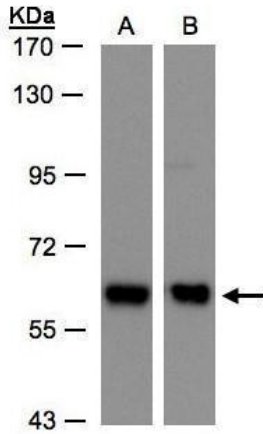
Product Type:	Primary Antibodies
Applications:	IF, WB
Recommended Dilution:	ICC/IF:1:100-1:1000; WB:1:500-1:3000
Reactivity:	Human (Predicted: Mouse, Chicken, Rat, Bovine)
Host:	Rabbit
Isotype:	IgG
Clonality:	Polyclonal
Immunogen:	Recombinant fragment corresponding to a region within amino acids 89 and 511 of COPD (Uniprot ID#P48444)
Formulation:	0.1M Tris, 0.1M Glycine, 20% Glycerol (pH7). 0.01% Thimerosal was added as a preservative.
Concentration:	lot specific
Purification:	Purified by antigen-affinity chromatography.
Conjugation:	Unconjugated
Storage:	Store at -20°C as received.
Stability:	Stable for 12 months from date of receipt.
Predicted Protein Size:	57 kDa
Gene Name:	archain 1
Database Link:	<a href="#">NP_001135753</a> <a href="#">Entrez Gene 213827</a> <a href="#">MouseEntrez Gene 300674</a> <a href="#">RatEntrez Gene 372</a> <a href="#">Human P48444</a>
Background:	This gene maps in a region, which include the mixed lineage leukemia and Friend leukemia virus integration 1 genes, where multiple disease-associated chromosome translocations occur. It is an intracellular protein. Archain sequences are well conserved among eukaryotes and this protein may play a fundamental role in eukaryotic cell biology. It has similarities to heat shock proteins and clathrin-associated proteins, and may be involved in vesicle structure or trafficking. [provided by RefSeq]
Synonyms:	COPD



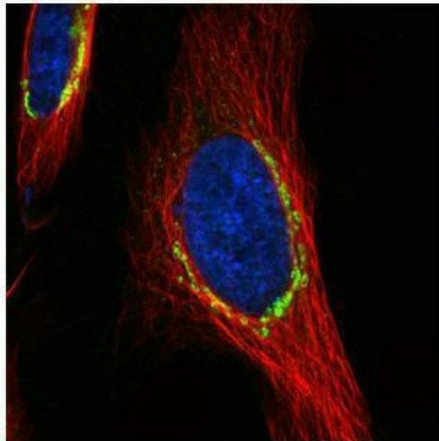
[View online »](#)

**Note:** Seq homology of immunogen across species: Mouse (98%), Chicken (92%), Rat (98%), Bovine (97%)

**Product images:**



Sample (30 ug whole cell lysate). A:H1299. B:Hep G2. 7.5% SDS PAGE. TA308389 diluted at 1:500



Confocal immunofluorescence analysis (Olympus FV10i) of paraformaldehyde-fixed HeLa, using COPD (TA308389) antibody (green) at 1:500 dilution. Alpha-tubulin filaments were labeled with anti-alpha tubulin antibody (red) at 1:2500.