

## Product datasheet for **TA308388**

### **p114RhoGEF (ARHGEF18) Rabbit Polyclonal Antibody**

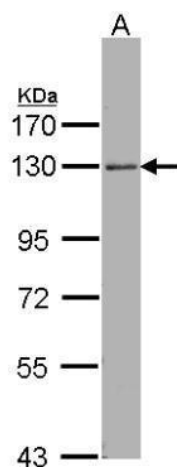
#### **Product data:**

<b>Product Type:</b>	Primary Antibodies
<b>Applications:</b>	IF, WB
<b>Recommended Dilution:</b>	ICC/IF:1:100-1:1000; WB:1:500-1:3000
<b>Reactivity:</b>	Human, Mouse
<b>Host:</b>	Rabbit
<b>Isotype:</b>	IgG
<b>Clonality:</b>	Polyclonal
<b>Immunogen:</b>	Recombinant fragment corresponding to a region within amino acids 770 and 990 of ARHGEF18 (Uniprot ID#Q6ZSZ5)
<b>Formulation:</b>	0.1M Tris, 0.1M Glycine, 10% Glycerol (pH7). 0.01% Thimerosal was added as a preservative.
<b>Purification:</b>	Purified by antigen-affinity chromatography.
<b>Conjugation:</b>	Unconjugated
<b>Storage:</b>	Store at -20°C as received.
<b>Stability:</b>	Stable for 12 months from date of receipt.
<b>Predicted Protein Size:</b>	114 kDa
<b>Gene Name:</b>	Rho/Rac guanine nucleotide exchange factor 18
<b>Database Link:</b>	<a href="#">NP_001124427</a> <a href="#">Entrez Gene 102098 Mouse</a> <a href="#">Entrez Gene 23370 Human</a> <a href="#">Q6ZSZ5</a>
<b>Background:</b>	Rho GTPases are GTP binding proteins that regulate a wide spectrum of cellular functions. These cellular processes include cytoskeletal rearrangements, gene transcription, cell growth and motility. Activation of Rho GTPases is under the direct control of guanine nucleotide exchange factors (GEFs). The protein encoded by this gene is a guanine nucleotide exchange factor and belongs to the Rho GTPase GFE family. Family members share a common feature, a Dbl (DH) homology domain followed by a pleckstrin (PH) homology domain. Alternatively spliced transcript variants encoding different isoforms have been identified. [provided by RefSeq]
<b>Synonyms:</b>	P114-RhoGEF

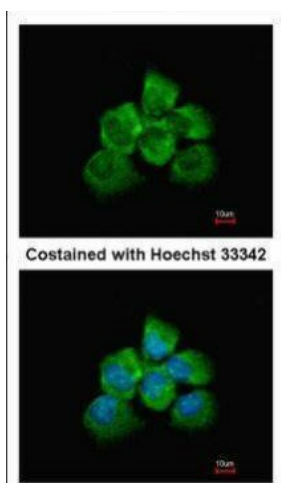


[View online »](#)

## Product images:



Sample (30 ug of whole cell lysate). A: Hep G2.  
7.5% SDS PAGE. TA308388 diluted at 1:1000



Immunofluorescence analysis of methanol-fixed  
A431, using ARHGEF18 (TA308388) antibody at  
1:200 dilution.