

Product datasheet for **TA308387**

PITPN (PITPNA) Rabbit Polyclonal Antibody

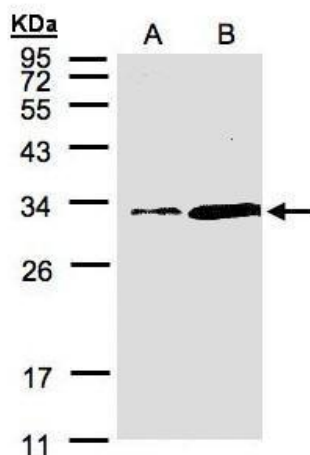
Product data:

Product Type:	Primary Antibodies
Applications:	WB
Recommended Dilution:	WB:1:500-1:3000
Reactivity:	Human (Predicted: Rat, Rabbit, Bovine, Rhesus Monkey, Mouse)
Host:	Rabbit
Isotype:	IgG
Clonality:	Polyclonal
Immunogen:	Synthetic peptide corresponding to a region within amino acids 208 and 270 of PITPN (Uniprot ID#Q00169)
Formulation:	1XPBS, 10% Glycerol (pH7). 0.01% Thimerosal was added as a preservative.
Concentration:	lot specific
Purification:	Purified by antigen-affinity chromatography.
Conjugation:	Unconjugated
Storage:	Store at -20°C as received.
Stability:	Stable for 12 months from date of receipt.
Predicted Protein Size:	32 kDa
Gene Name:	phosphatidylinositol transfer protein alpha
Database Link:	NP_006215 Entrez Gene 18738 Mouse Entrez Gene 29525 Rat Entrez Gene 5306 Human Q00169
Background:	Phosphatidylinositol transfer protein is a member of a diverse set of cytosolic phospholipid transfer proteins that are distinguished by their ability to transfer phospholipids between membranes in vitro (Wirtz, 1991 [PubMed 1883207]). [supplied by OMIM]
Synonyms:	HEL-S-36; PI-TPalpha; PITPN; VIB1A
Note:	Seq homology of immunogen across species: Mouse (100%), Rat (100%), Rabbit (100%), Rhesus Monkey (100%), Bovine (100%)



[View online »](#)

Product images:



Sample (30 ug of whole cell lysate). A:Hep G2.
B:MOLT4. 12% SDS PAGE. TA308387 diluted at
1:1500