

Product datasheet for **TA308383**

RGS14 Rabbit Polyclonal Antibody

Product data:

| | |
|-------------------------|--|
| Product Type: | Primary Antibodies |
| Applications: | IHC, WB |
| Recommended Dilution: | IHC:1:100-1:1000; WB:1:500-1:3000 |
| Reactivity: | Human |
| Host: | Rabbit |
| Isotype: | IgG |
| Clonality: | Polyclonal |
| Immunogen: | Synthetic peptide corresponding to a region within amino acids 504 and 566 of RGS14 (Uniprot ID#O43566) |
| Formulation: | 0.1M Tris, 0.1M Glycine, 10% Glycerol (pH7). 0.01% Thimerosal was added as a preservative. |
| Purification: | Purified by antigen-affinity chromatography. |
| Conjugation: | Unconjugated |
| Storage: | Store at -20°C as received. |
| Stability: | Stable for 12 months from date of receipt. |
| Predicted Protein Size: | 61 kDa |
| Gene Name: | regulator of G-protein signaling 14 |
| Database Link: | NP_006471 Entrez Gene 10636 Human O43566 |
| Background: | This gene encodes a member of the regulator of G-protein signaling family. This protein contains one RGS domain, two Raf-like Ras-binding domains (RBDs), and one GoLoco domain. The protein attenuates the signaling activity of G-proteins by binding, through its GoLoco domain, to specific types of activated, GTP-bound G alpha subunits. Acting as a GTPase activating protein (GAP), the protein increases the rate of conversion of the GTP to GDP. This hydrolysis allows the G alpha subunits to bind G beta/gamma subunit heterodimers, forming inactive G-protein heterotrimers, thereby terminating the signal. Alternate transcriptional splice variants of this gene have been observed but have not been thoroughly characterized. [provided by RefSeq] |

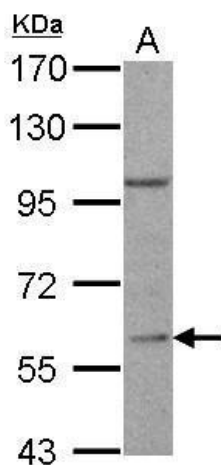


[View online »](#)

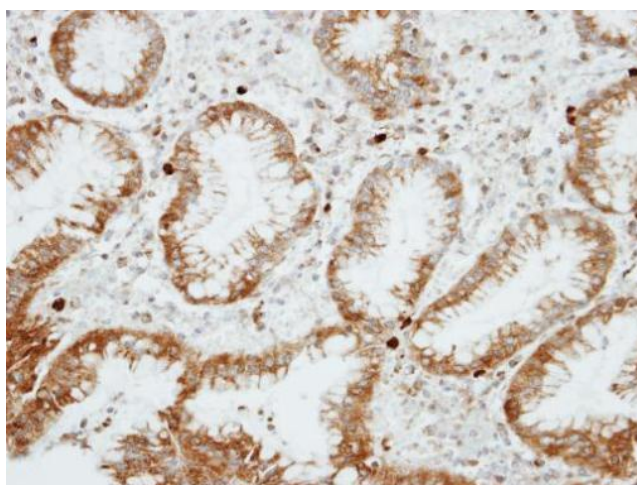
Synonyms: regulator of G-protein signaling 14; regulator of G-protein signalling 14

Protein Families: Druggable Genome

Product images:



RGS14 antibody [C3], C-term detects RGS14 protein by Western blot analysis. A. 30 ug Jurkat whole lysate/extract. 7.5 % SDS-PAGE. RGS14 antibody [C3], C-term (TA308383) dilution: 1:500



Immunohistochemical analysis of paraffin-embedded GASTRIC CA, using RGS14 (TA308383) antibody at 1:100 dilution.