

## Product datasheet for **TA308381**

### beta IV Tubulin (TUBB4A) Rabbit Polyclonal Antibody

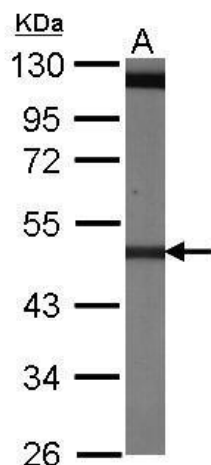
#### Product data:

Product Type:	Primary Antibodies
Applications:	IF, WB
Recommended Dilution:	ICC/IF:1:100-1:1000; WB:1:500-1:3000
Reactivity:	Human, Mouse (Predicted: Rat, Xenopus, Bovine, X. tropicalis)
Host:	Rabbit
Isotype:	IgG
Clonality:	Polyclonal
Immunogen:	Recombinant protein fragment contain a sequence corresponding to a region within amino acids 238 and 410 of beta Tubulin 4
Formulation:	0.1M Tris, 0.1M Glycine, 10% Glycerol (pH7). 0.01% Thimerosal was added as a preservative.
Concentration:	lot specific
Purification:	Purified by antigen-affinity chromatography.
Conjugation:	Unconjugated
Storage:	Store at -20°C as received.
Stability:	Stable for 12 months from date of receipt.
Predicted Protein Size:	50 kDa
Gene Name:	tubulin beta 4A class IVa
Database Link:	<a href="#">NP_006078</a> <a href="#">Entrez Gene 22153 Mouse</a> <a href="#">Entrez Gene 29213 Rat</a> <a href="#">Entrez Gene 10382 Human</a> <a href="#">P04350</a>
Synonyms:	beta-5; DYT4; TUBB4
Note:	Seq homology of immunogen across species: Rat (100%), Xenopus laevis (96%), Bovine (100%), Xenopus tropicalis (97%)
Protein Families:	Druggable Genome
Protein Pathways:	Gap junction, Pathogenic Escherichia coli infection

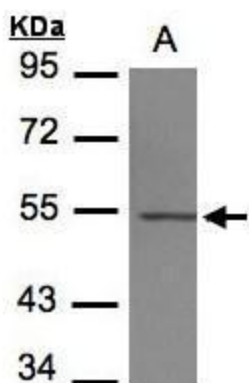


[View online »](#)

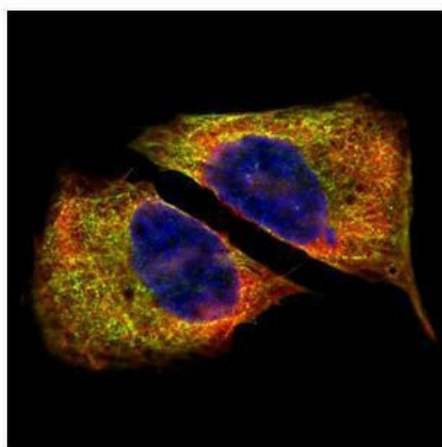
Product images:



Sample (30 ug of whole cell lysate). A: NIH-3T3. 10% SDS PAGE. TA308381 diluted at 1:1000.



Sample (30 ug of whole cell lysate). A:293T. 7.5% SDS PAGE. TA308381 diluted at 1:1000



Confocal immunofluorescence analysis (Olympus FV10i) of paraformaldehyde-fixed U2OS, using beta Tubulin 4 (TA308381) antibody (Green) at 1:500 dilution. Alpha-tubulin filaments were labeled with anti-alpha tubulin antibody (Red) at 1:2000.