

Product datasheet for **TA308379**

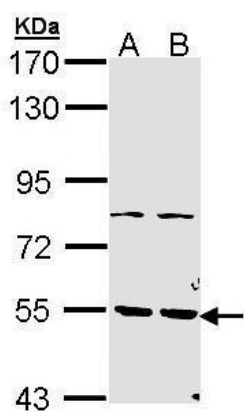
PDE1A Rabbit Polyclonal Antibody

Product data:

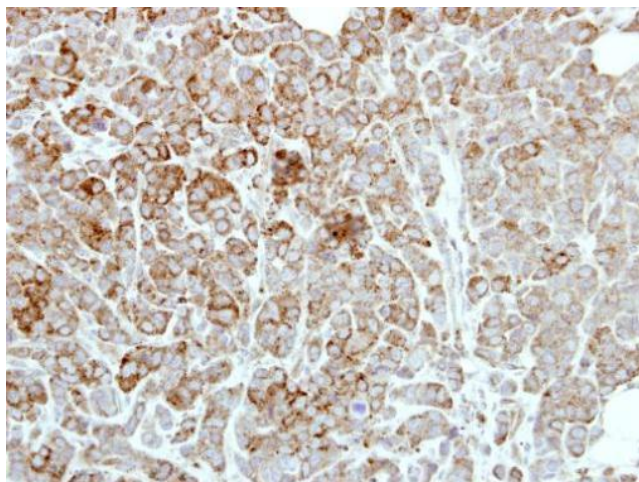
Product Type:	Primary Antibodies
Applications:	IHC, WB
Recommended Dilution:	IHC:1:100-1:1000; WB:1:500-1:3000
Reactivity:	Human (Predicted: Mouse, Dog, Rat, Bovine)
Host:	Rabbit
Isotype:	IgG
Clonality:	Polyclonal
Immunogen:	Recombinant fragment corresponding to a region within amino acids 212 and 535 of PDE1A (Uniprot ID#P54750)
Formulation:	0.1M Tris, 0.1M Glycine, 10% Glycerol (pH7). 0.01% Thimerosal was added as a preservative.
Concentration:	lot specific
Purification:	Purified by antigen-affinity chromatography.
Conjugation:	Unconjugated
Storage:	Store at -20°C as received.
Stability:	Stable for 12 months from date of receipt.
Predicted Protein Size:	61 kDa
Gene Name:	phosphodiesterase 1A
Database Link:	NP_001003683 Entrez Gene 18573 MouseEntrez Gene 81529 RatEntrez Gene 403652 DogEntrez Gene 5136 Human P54750
Synonyms:	CAM-PDE-1A; HCAM-1; HCAM1; HSPDE1A
Note:	Seq homology of immunogen across species: Mouse (93%), Dog (89%), Rat (93%), Bovine (88%)
Protein Families:	Druggable Genome
Protein Pathways:	Calcium signaling pathway, Progesterone-mediated oocyte maturation, Purine metabolism, Taste transduction



[View online »](#)

Product images:

Sample (30 ug of whole cell lysate). A: H1299. B: HeLa. 7.5% SDS PAGE. TA308379 diluted at 1:1000.



Immunohistochemical analysis of paraffin-embedded MDAMB468 xenograft, using PDE1A (TA308379) antibody at 1:500 dilution.