

Product datasheet for **TA308378**

Ubiquinol Cytochrome C Reductase Core Protein I (UQCRC1) Rabbit Polyclonal Antibody

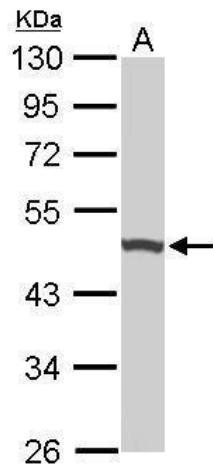
Product data:

Product Type:	Primary Antibodies
Applications:	WB
Recommended Dilution:	WB:1:500-1:3000
Reactivity:	Human, Mouse (Predicted: Monkey)
Host:	Rabbit
Isotype:	IgG
Clonality:	Polyclonal
Immunogen:	Recombinant fragment corresponding to a region within amino acids 1 and 206 of UQCRC1 (Uniprot ID#P31930)
Formulation:	1XPBS, 20% Glycerol (pH7). 0.01% Thimerosal was added as a preservative.
Concentration:	lot specific
Purification:	Purified by antigen-affinity chromatography.
Conjugation:	Unconjugated
Storage:	Store at -20°C as received.
Stability:	Stable for 12 months from date of receipt.
Predicted Protein Size:	53 kDa
Gene Name:	ubiquinol-cytochrome c reductase core protein I
Database Link:	NP_003356 Entrez Gene 22273 Mouse Entrez Gene 677864 Monkey Entrez Gene 7384 Human P31930
Synonyms:	D3S3191; QCR1; UQCR1
Note:	Seq homology of immunogen across species: Monkey (99%)
Protein Families:	Druggable Genome, Protease
Protein Pathways:	Alzheimer's disease, Cardiac muscle contraction, Huntington's disease, Metabolic pathways, Oxidative phosphorylation, Parkinson's disease

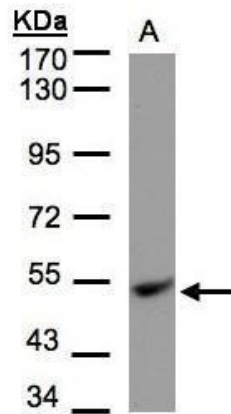


[View online »](#)

Product images:



Sample (50 ug of whole cell lysate). A: Mouse brain. 10% SDS PAGE. TA308378 diluted at 1:1000.



Sample (30 ug of whole cell lysate). A: Hep G2. 7.5% SDS PAGE. TA308378 diluted at 1:1000