

Product datasheet for **TA308376**

ETEA (FAF2) Rabbit Polyclonal Antibody

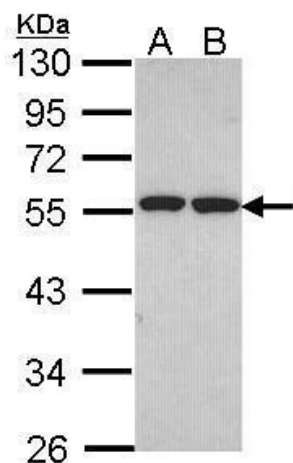
Product data:

Product Type:	Primary Antibodies
Applications:	IF, IHC, WB
Recommended Dilution:	ICC/IF:1:100-1:1000; IHC:1:100-1:1000; WB:1:500-1:3000
Reactivity:	Human (Predicted: Rat, Bovine, Rhesus Monkey, Mouse)
Host:	Rabbit
Isotype:	IgG
Clonality:	Polyclonal
Immunogen:	Synthetic peptide corresponding to a region within amino acids 383 and 445 of ETEA (Uniprot ID#Q96CS3)
Formulation:	0.1M Tris, 0.1M Glycine, 10% Glycerol (pH7). 0.01% Thimerosal was added as a preservative.
Concentration:	lot specific
Purification:	Purified by antigen-affinity chromatography.
Conjugation:	Unconjugated
Storage:	Store at -20°C as received.
Stability:	Stable for 12 months from date of receipt.
Predicted Protein Size:	53 kDa
Gene Name:	Fas associated factor family member 2
Database Link:	NP_055428 Entrez Gene 76577 Mouse Entrez Gene 291000 Rat Entrez Gene 23197 Human Q96CS3
Background:	The protein encoded by this gene is highly expressed in peripheral blood of patients with atopic dermatitis (AD), compared to normal individuals. It may play a role in regulating the resistance to apoptosis that is observed in T cells and eosinophils of AD patients. [provided by RefSeq]
Synonyms:	ETEa; UBxD8; UBxN3B
Note:	Seq homology of immunogen across species: Mouse (100%), Rat (100%), Rhesus Monkey (100%), Bovine (100%)

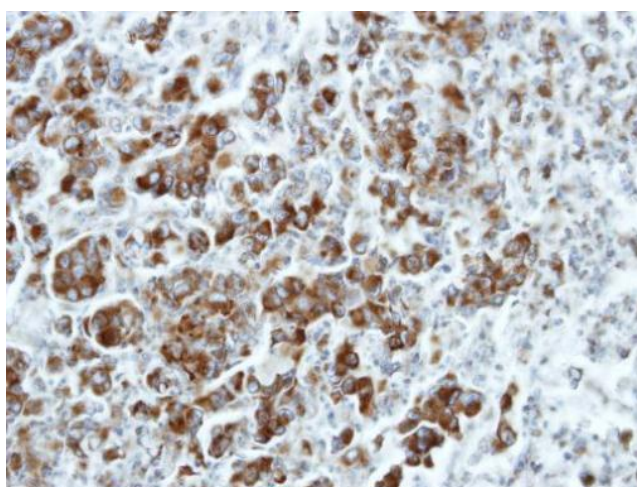


[View online »](#)

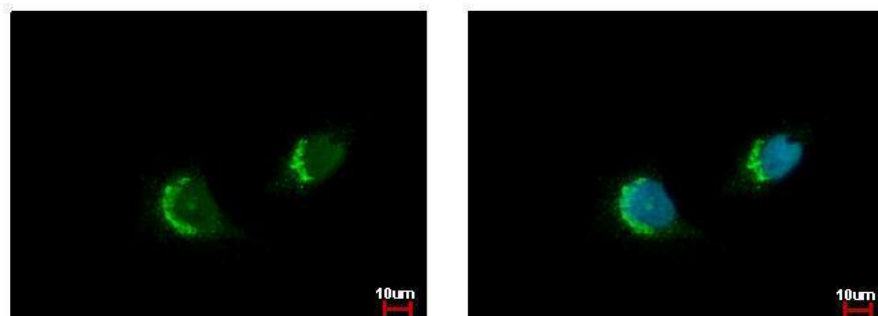
Product images:



Sample (30 ug of whole cell lysate). A: H1299. B: HeLa. 10% SDS PAGE. TA308376 diluted at 1:1000.



Immunohistochemical analysis of paraffin-embedded CL1-5 xenograft, using ETEA (TA308376) antibody at 1:100 dilution.



ETEa antibody [C3], C-term detects FAF2 protein at endoplasmic reticulum by immunofluorescent analysis. Sample: HeLa cells were fixed in 4% paraformaldehyde at RT for 15 min. Green: FAF2 protein stained by ETEa antibody [C3], C-term (TA308376) diluted at