

Product datasheet for **TA308375**

Slap (SLA) Rabbit Polyclonal Antibody

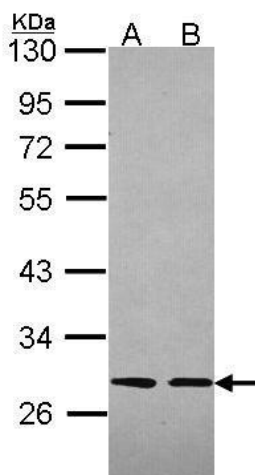
Product data:

Product Type:	Primary Antibodies
Applications:	IF, IHC, WB
Recommended Dilution:	ICC/IF:1:100-1:1000; IHC:1:100-1:1000; WB:1:500-1:3000
Reactivity:	Human
Host:	Rabbit
Isotype:	IgG
Clonality:	Polyclonal
Immunogen:	Recombinant fragment corresponding to a region within amino acids 1 and 276 of Slap (Uniprot ID#Q13239)
Formulation:	0.1M Tris, 0.1M Glycine, 20% Glycerol (pH7). 0.01% Thimerosal was added as a preservative.
Concentration:	lot specific
Purification:	Purified by antigen-affinity chromatography.
Conjugation:	Unconjugated
Storage:	Store at -20°C as received.
Stability:	Stable for 12 months from date of receipt.
Predicted Protein Size:	31 kDa
Gene Name:	Src-like-adaptor
Database Link:	NP_001039022 Entrez Gene 6503 Human Q13239
Synonyms:	SLA1; SLAP
Protein Families:	Druggable Genome

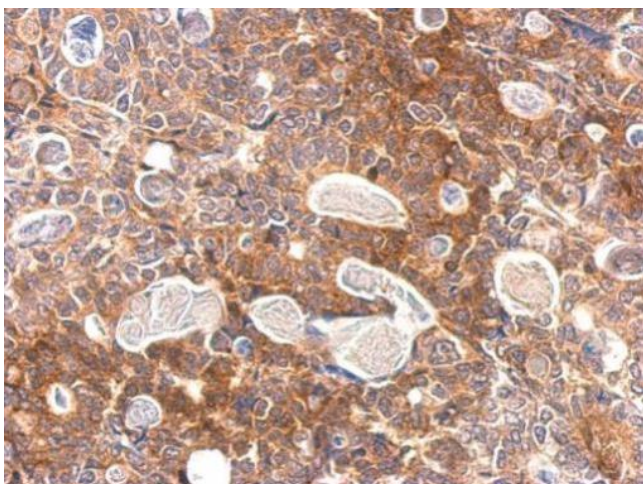


[View online »](#)

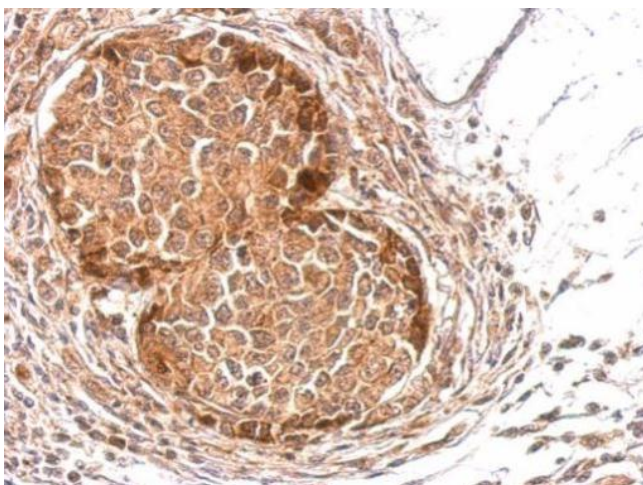
Product images:



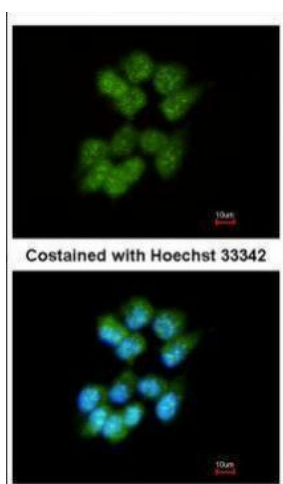
Sample (30 ug of whole cell lysate). A: 293T. B: A431. 12% SDS PAGE. TA308375 diluted at 1:2000.



Slap antibody detects SLA protein at cytosol on gastric carcinoma by immunohistochemical analysis. Sample: Paraffin-embedded gastric carcinoma. Slap antibody (TA308375) dilution: 1:500.



Slap antibody detects SLA protein at cytosol on mouse stomach by immunohistochemical analysis. Sample: Paraffin-embedded mouse stomach. Slap antibody (TA308375) dilution: 1:500.



Immunofluorescence analysis of methanol-fixed A431, using Slap (TA308375) antibody at 1:200 dilution.