

Product datasheet for **TA308372**

PGAM1 Rabbit Polyclonal Antibody

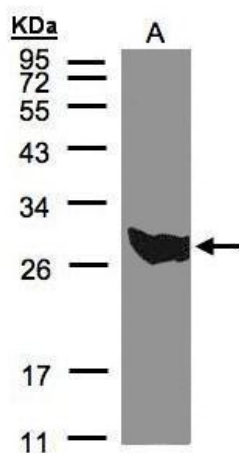
Product data:

Product Type:	Primary Antibodies
Applications:	WB
Recommended Dilution:	WB:1:500-1:3000
Reactivity:	Human (Predicted: Rat, Xenopus, Chicken, Chimpanzee, Bovine, Rhesus Monkey, X. tropicalis, Mouse)
Host:	Rabbit
Isotype:	IgG
Clonality:	Polyclonal
Immunogen:	Synthetic peptide corresponding to a region within amino acids 191 and 254 of PGAM1 (Uniprot ID#P18669)
Formulation:	0.1M Tris, 0.1M Glycine, 10% Glycerol (pH7). 0.01% Thimerosal was added as a preservative.
Concentration:	lot specific
Purification:	Purified by antigen-affinity chromatography.
Conjugation:	Unconjugated
Storage:	Store at -20°C as received.
Stability:	Stable for 12 months from date of receipt.
Predicted Protein Size:	29 kDa
Gene Name:	phosphoglycerate mutase 1
Database Link:	NP_002620 Entrez Gene 18648 Mouse Entrez Gene 24642 Rat Entrez Gene 5223 Human P18669
Synonyms:	HEL-S-35; PGAM-B; PGAMA
Note:	Seq homology of immunogen across species: Mouse (93%), Rat (93%), Xenopus laevis (100%), Xenopus Tropicalis (100%), Chicken (93%), Rhesus Monkey (100%), Chimpanzee (100%), Bovine (100%)
Protein Pathways:	Glycolysis / Gluconeogenesis, Metabolic pathways



[View online »](#)

Product images:



Sample (30 ug of whole cell lysate). A:293T. 12% SDS PAGE. TA308372 diluted at 1:500