

## Product datasheet for **TA308368**

### DMC1 Rabbit Polyclonal Antibody

#### Product data:

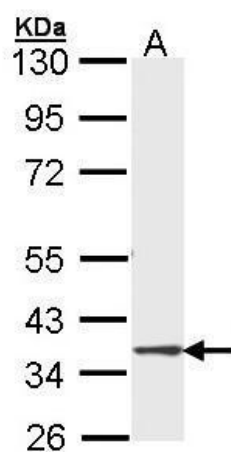
Product Type:	Primary Antibodies
Applications:	IHC, WB
Recommended Dilution:	IHC:1:100-1:1000; WB:1:500-1:3000
Reactivity:	Human (Predicted: Bovine, Rat, Zebrafish)
Host:	Rabbit
Isotype:	IgG
Clonality:	Polyclonal
Immunogen:	Recombinant fragment corresponding to a region within amino acids 1 and 206 of DMC1 (Uniprot ID#Q14565)
Formulation:	0.1M Tris, 0.1M Glycine, 20% Glycerol (pH7). 0.01% Thimerosal was added as a preservative.
Concentration:	lot specific
Purification:	Purified by antigen-affinity chromatography.
Conjugation:	Unconjugated
Storage:	Store at -20°C as received.
Stability:	Stable for 12 months from date of receipt.
Predicted Protein Size:	38 kDa
Gene Name:	DNA meiotic recombinase 1
Database Link:	<a href="#">NP_008999</a> <a href="#">Entrez Gene 362960 RatEntrez Gene 11144 Human Q14565</a>
Background:	The protein encoded by this gene is essential for meiotic homologous recombination. Genetic recombination in meiosis plays an important role in generating diversity of genetic information. The product of this gene is structurally and evolutionary related to the products of the yeast RAD51 and E. coli RecA genes. Alternative splice variants of this gene have been described but their full-length nature has not been determined. [provided by RefSeq]
Synonyms:	dj199H16.1; DMC1H; LIM15
Note:	Seq homology of immunogen across species: Rat (95%), Zebrafish (83%), Bovine (98%)



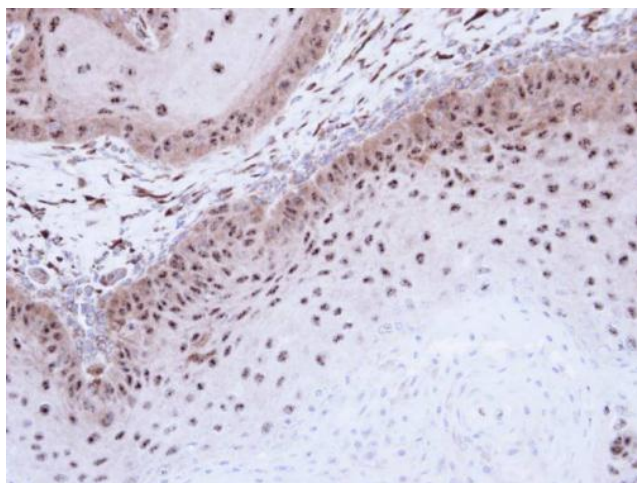
[View online »](#)

Protein Families: Druggable Genome

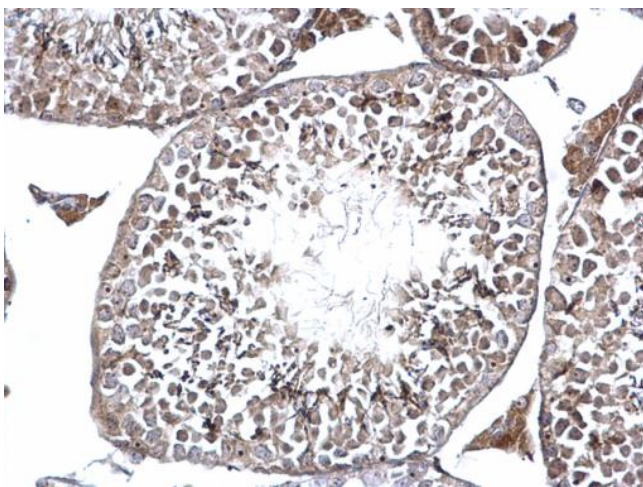
### Product images:



Sample (30 ug of whole cell lysate). A: Molt-4.  
10% SDS PAGE. TA308368 diluted at 1:1000.



Immunohistochemical analysis of paraffin-embedded Cal27 xenograft, using DMC1 (TA308368) antibody at 1:500 dilution.



DMC1 antibody [N1C1] detects DMC1 protein at nucleolus on mouse testis by immunohistochemical analysis. Sample: Paraffin-embedded mouse testis. DMC1 antibody [N1C1] (TA308368) dilution: 1:500.