

Product datasheet for **TA308366**

Dopamine beta Hydroxylase (DBH) Rabbit Polyclonal Antibody

Product data:

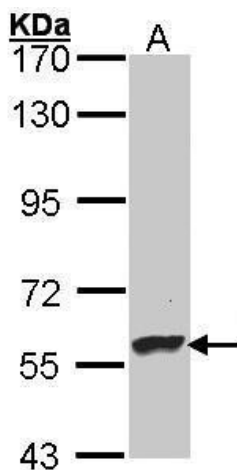
Product Type:	Primary Antibodies
Applications:	IF, IHC, WB
Recommended Dilution:	ICC/IF:1:100-1:1000; IHC:1:100-1:1000; WB:1:1000-1:10000
Reactivity:	Human
Host:	Rabbit
Isotype:	IgG
Clonality:	Polyclonal
Immunogen:	Recombinant fragment corresponding to a region within amino acids 8 and 320 of Dopamine beta Hydroxylase (Uniprot ID#P09172)
Formulation:	1XPBS, 20% Glycerol (pH7). 0.025% ProClin 300 was added as a preservative.
Concentration:	lot specific
Purification:	Purified by antigen-affinity chromatography.
Conjugation:	Unconjugated
Storage:	Store at -20°C as received.
Stability:	Stable for 12 months from date of receipt.
Predicted Protein Size:	69 kDa
Gene Name:	dopamine beta-hydroxylase
Database Link:	NP_000778 Entrez Gene 1621 Human P09172
Background:	The protein encoded by this gene is an oxidoreductase belonging to the copper type II, ascorbate-dependent monooxygenase family. It is present in the synaptic vesicles of postganglionic sympathetic neurons and converts dopamine to norepinephrine. It exists in both soluble and membrane-bound forms, depending on the absence or presence, respectively, of a signal peptide. [provided by RefSeq]
Synonyms:	DBM
Protein Families:	Druggable Genome, Secreted Protein, Transmembrane



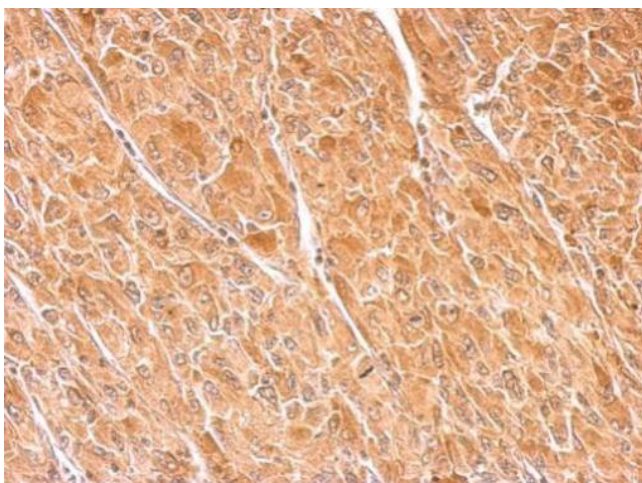
[View online »](#)

Protein Pathways: Metabolic pathways, Tyrosine metabolism

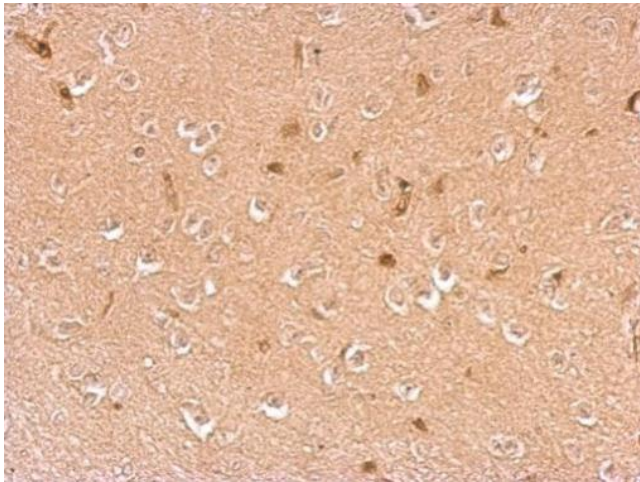
Product images:



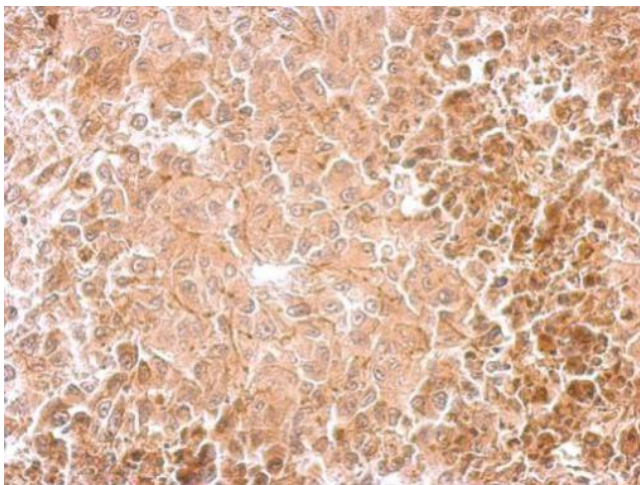
Sample (30 ug of whole cell lysate). A: Hep G2. 7.5% SDS PAGE. TA308366 diluted at 1:5000.



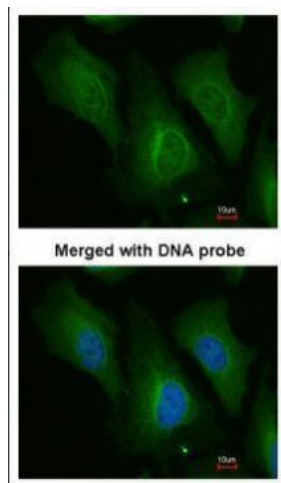
Dopamine beta hydroxylase antibody detects DBH protein at cytosol on U87 xenograft by immunohistochemical analysis. Sample: Paraffin-embedded U87 xenograft. Dopamine beta hydroxylase antibody (TA308366) dilution: 1:500.



Dopamine beta hydroxylase antibody detects DBH protein at cytosol on mouse brain by immunohistochemical analysis. Sample: Paraffin-embedded mouse brain. Dopamine beta hydroxylase antibody (TA308366) dilution: 1:500.



Dopamine beta hydroxylase antibody detects DBH protein at cytosol on RT2 xenograft by immunohistochemical analysis. Sample: Paraffin-embedded RT2 xenograft. Dopamine beta hydroxylase antibody (TA308366) dilution: 1:500.



Immunofluorescence analysis of paraformaldehyde-fixed HeLa, using Dopamine beta-Hydroxylase (TA308366) antibody at 1:200 dilution.