

## Product datasheet for **TA308365**

### GRAP2 Rabbit Polyclonal Antibody

#### Product data:

Product Type:	Primary Antibodies
Applications:	IHC, WB
Recommended Dilution:	IHC:1:100-1:1000; WB:1:500-1:3000
Reactivity:	Human (Predicted: Mouse, Rat, Bovine)
Host:	Rabbit
Isotype:	IgG
Clonality:	Polyclonal
Immunogen:	Recombinant fragment corresponding to a region within amino acids 1 and 174 of GRAP2 (Uniprot ID#O75791)
Formulation:	0.1M Tris, 0.1M Glycine, 20% Glycerol (pH7). 0.01% Thimerosal was added as a preservative.
Concentration:	lot specific
Purification:	Purified by antigen-affinity chromatography.
Conjugation:	Unconjugated
Storage:	Store at -20°C as received.
Stability:	Stable for 12 months from date of receipt.
Predicted Protein Size:	38 kDa
Gene Name:	GRB2-related adaptor protein 2
Database Link:	<a href="#">NP_004801</a> <a href="#">Entrez Gene 17444 MouseEntrez Gene 366962 RatEntrez Gene 9402 Human O75791</a>
Background:	This gene encodes a member of the GRB2/Sem5/Drk family. This member is an adaptor-like protein involved in leukocyte-specific protein-tyrosine kinase signaling. Like its related family member, GRB2-related adaptor protein (GRAP), this protein contains an SH2 domain flanked by two SH3 domains. This protein interacts with other proteins, such as GRB2-associated binding protein 1 (GAB1) and the SLP-76 leukocyte protein (LCP2), through its SH3 domains. Transcript variants utilizing alternative polyA sites exist. [provided by RefSeq]
Synonyms:	GADS; GRAP-2; GRB2L; GRBLG; GrbX; Grf40; GRID; GRPL; Mona; P38



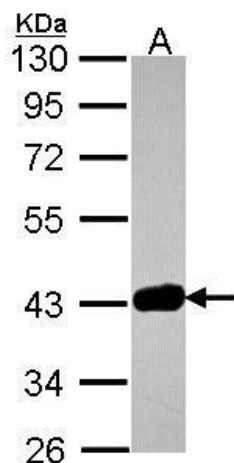
[View online »](#)

**Note:** Seq homology of immunogen across species: Mouse (90%), Rat (92%), Bovine (90%)

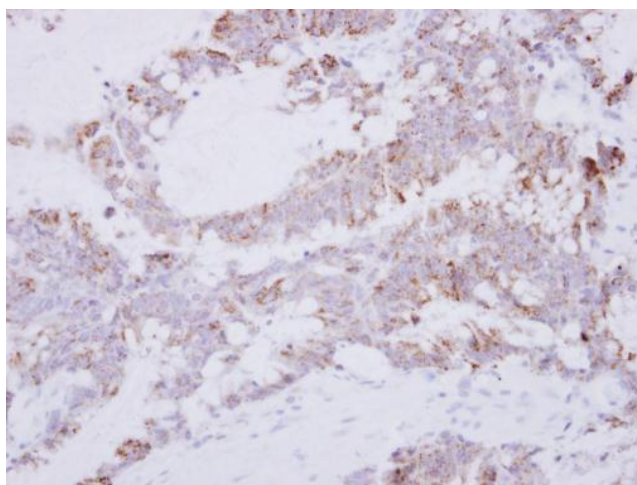
**Protein Families:** Druggable Genome

**Protein Pathways:** T cell receptor signaling pathway

**Product images:**



Sample (30 ug of whole cell lysate). A: JurKat. 10% SDS PAGE. TA308365 diluted at 1:1000.



Immunohistochemical analysis of paraffin-embedded Colon ca, using GRAP2 (TA308365) antibody at 1:500 dilution.