

Product datasheet for **TA308363**

TFEC Rabbit Polyclonal Antibody

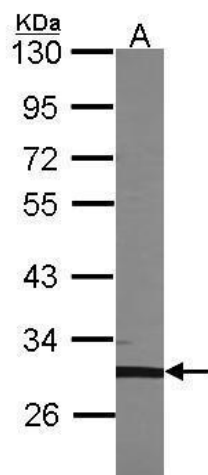
Product data:

Product Type:	Primary Antibodies
Applications:	IF, WB
Recommended Dilution:	ICC/IF:1:100-1:1000; WB:1:500-1:3000
Reactivity:	Human (Predicted: Chimpanzee)
Host:	Rabbit
Isotype:	IgG
Clonality:	Polyclonal
Immunogen:	Synthetic peptide corresponding to a region within amino acids 1 and 43 of TFEC (Uniprot ID#O14948)
Formulation:	0.1M Tris, 0.1M Glycine, 10% Glycerol (pH7). 0.01% Thimerosal was added as a preservative.
Concentration:	lot specific
Purification:	Purified by antigen-affinity chromatography.
Conjugation:	Unconjugated
Storage:	Store at -20°C as received.
Stability:	Stable for 12 months from date of receipt.
Predicted Protein Size:	36 kDa
Gene Name:	transcription factor EC
Database Link:	NP_001018068 Entrez Gene 22797 Human O14948
Synonyms:	bHLHe34; hTFEC-L; TC FEC; TFE-C; TFEC-L; TFEC L
Note:	Seq homology of immunogen across species: Chimpanzee (100%)
Protein Families:	Druggable Genome, Transcription Factors

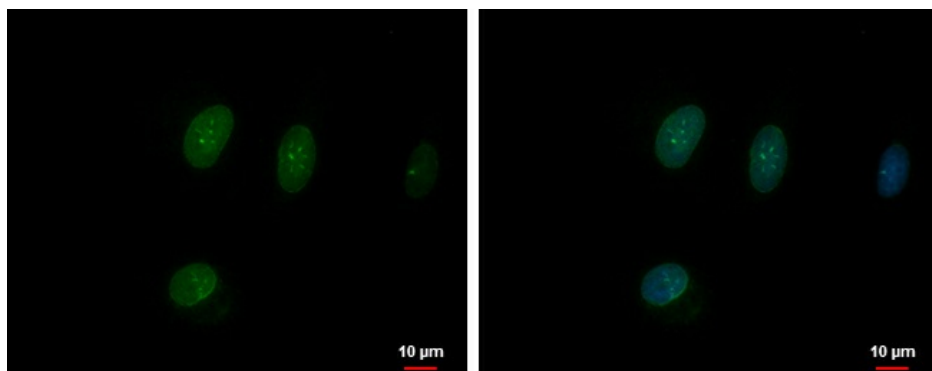


[View online »](#)

Product images:



Sample (30 ug of whole cell lysate). A: 293T. 10% SDS PAGE. TFEC antibody. TA308363 diluted at 1:1000.



TFEC antibody [N1], N-term detects TFEC protein at nucleus by immunofluorescent analysis. Sample: A549 cells were fixed in 4% paraformaldehyde at RT for 15 min. Green: TFEC protein stained by TFEC antibody [N1], N-term (TA308363) diluted at 1:500. Blue: H