

Product datasheet for **TA308362**

SAMHD1 Rabbit Polyclonal Antibody

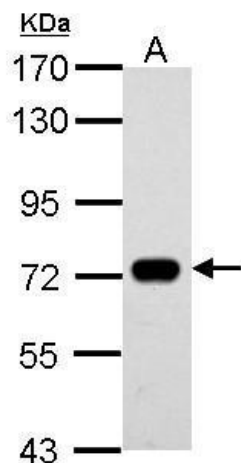
Product data:

Product Type:	Primary Antibodies
Applications:	IF, IHC, WB
Recommended Dilution:	ICC/IF:1:100-1:1000; WB:1:500-1:3000
Reactivity:	Human
Host:	Rabbit
Isotype:	IgG
Clonality:	Polyclonal
Immunogen:	Recombinant fragment corresponding to a region within amino acids 122 and 451 of SAMHD1 (Uniprot ID#Q9Y3Z3)
Formulation:	0.1M Tris, 0.1M Glycine, 10% Glycerol (pH7). 0.01% Thimerosal was added as a preservative.
Concentration:	lot specific
Purification:	Purified by antigen-affinity chromatography.
Conjugation:	Unconjugated
Storage:	Store at -20°C as received.
Stability:	Stable for 12 months from date of receipt.
Predicted Protein Size:	72 kDa
Gene Name:	SAM and HD domain containing deoxynucleoside triphosphate triphosphohydrolase 1
Database Link:	NP_056289 Entrez Gene 25939 Human Q9Y3Z3
Synonyms:	CHBL2; DCIP; HDDC1; MOP-5; SBBI88

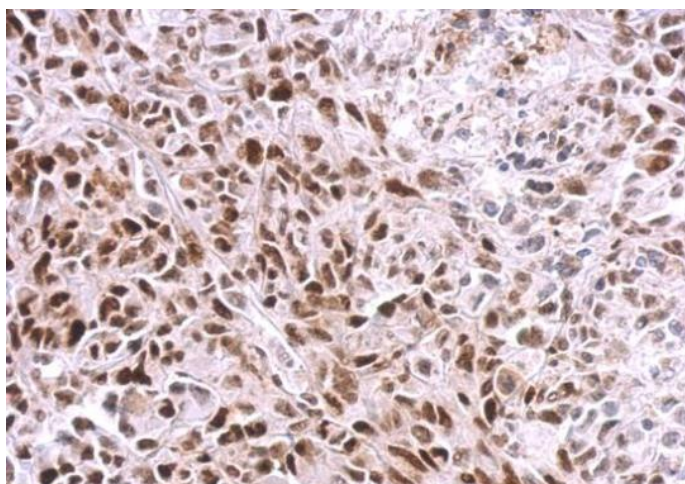


[View online »](#)

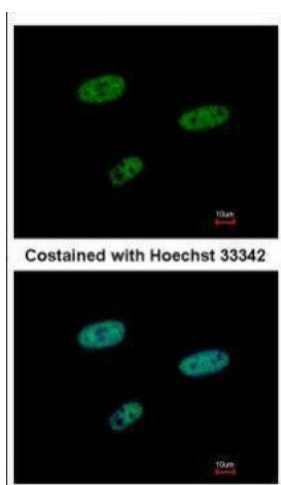
Product images:



Sample (30 ug of whole cell lysate). A: THP-1.
7.5% SDS PAGE. TA308362 diluted at 1:500.



SAMHD1 antibody [N2C2], Internal detects SAMHD1 protein at nucleus on SkHep1 xenograft by immunohistochemical analysis. Sample: Paraffin-embedded SkHep1 xenograft. SAMHD1 antibody [N2C2], Internal (TA308362) dilution: 1:500.



Immunofluorescence analysis of paraformaldehyde-fixed HeLa, using SAMHD1 (TA308362) antibody at 1:500 dilution.