

Product datasheet for **TA308361**

PPM1K Rabbit Polyclonal Antibody

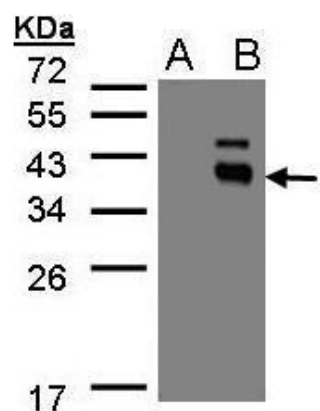
Product data:

Product Type:	Primary Antibodies
Applications:	IHC, WB
Recommended Dilution:	IHC:1:100-1:1000; WB:1:500-1:3000
Reactivity:	Human (Predicted: Mouse, Bovine)
Host:	Rabbit
Isotype:	IgG
Clonality:	Polyclonal
Immunogen:	Recombinant fragment corresponding to a region within amino acids 1 and 364 of PPM1K (Uniprot ID#Q8N3J5)
Formulation:	0.1M Tris, 0.1M Glycine, 10% Glycerol (pH7). 0.01% Thimerosal was added as a preservative.
Concentration:	lot specific
Purification:	Purified by antigen-affinity chromatography.
Conjugation:	Unconjugated
Storage:	Store at -20°C as received.
Stability:	Stable for 12 months from date of receipt.
Predicted Protein Size:	41 kDa
Gene Name:	protein phosphatase, Mg ²⁺ /Mn ²⁺ dependent 1K
Database Link:	NP_689755 Entrez Gene 243382 Mouse Entrez Gene 152926 Human Q8N3J5
Synonyms:	BDP; MSUDMV; PP2Ckappa; PP2Cm; PTMP; UG0882E07
Note:	Seq homology of immunogen across species: Mouse (92%), Bovine (93%)
Protein Families:	Phosphatase

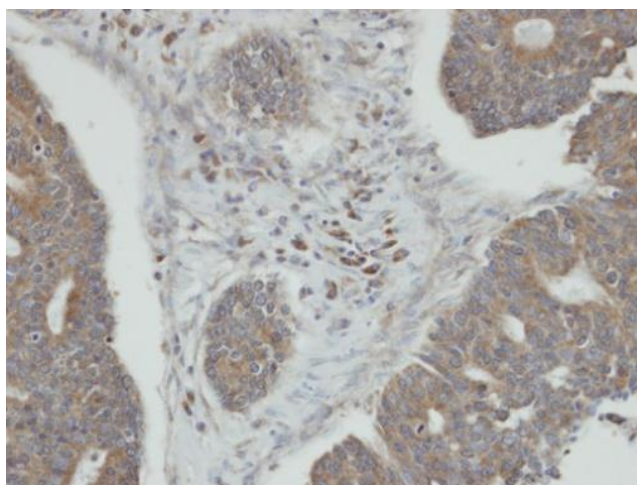


[View online »](#)

Product images:



Western Blot analysis of PPM1K expression in transfected 293T cell line by PPM1K polyclonal antibody. A: Non-transfected lysate. B: PPM1K transfected lysate. 12% SDS PAGE. TA308361 diluted at 1:500



Immunohistochemical analysis of paraffin-embedded endometrial ovarian carcinoma (OVCA), using PPM1K (TA308361) antibody at 1:100 dilution.