

Product datasheet for **TA308359**

OGT Rabbit Polyclonal Antibody

Product data:

Product Type:	Primary Antibodies
Applications:	IF, IHC, WB
Recommended Dilution:	ICC/IF:1:100-1:1000; IHC:1:100-1:1000; WB:1:500-1:3000
Reactivity:	Human, Mouse (Predicted: Pig, Bovine)
Host:	Rabbit
Isotype:	IgG
Clonality:	Polyclonal
Immunogen:	Recombinant fragment corresponding to a region within amino acids 223 and 502 of O-GlcNAc transferase (Uniprot ID#O15294)
Formulation:	1XPBS, 1% BSA, 20% Glycerol (pH7). 0.025% ProClin 300 was added as a preservative.
Concentration:	lot specific
Purification:	Purified by antigen-affinity chromatography.
Conjugation:	Unconjugated
Storage:	Store at -20°C as received.
Stability:	Stable for 12 months from date of receipt.
Predicted Protein Size:	116 kDa
Gene Name:	O-linked N-acetylglucosamine (GlcNAc) transferase
Database Link:	NP_858059 Entrez Gene 108155 Mouse Entrez Gene 8473 Human O15294
Background:	O-linked N-acetylglucosamine (O-GlcNAc) transferase (OGT) catalyzes the addition of a single N-acetylglucosamine in O-glycosidic linkage to serine or threonine residues. Since both phosphorylation and glycosylation compete for similar serine or threonine residues, the two processes may compete for sites, or they may alter the substrate specificity of nearby sites by steric or electrostatic effects. The protein contains nine tetratricopeptide repeats and a putative bipartite nuclear localization signal. Two alternatively spliced transcript variants encoding distinct isoforms have been found for this gene. [provided by RefSeq]
Synonyms:	HRNT1; O-GLCNAC



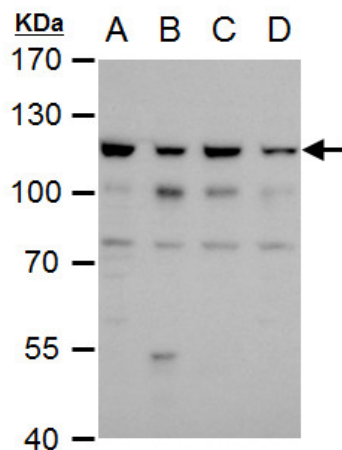
[View online »](#)

Note: Seq homology of immunogen across species: Pig (100%), Bovine (100%)

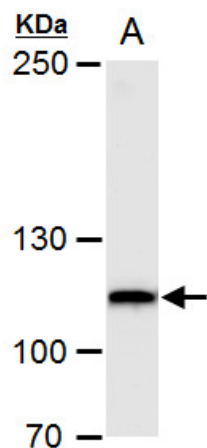
Protein Families: Druggable Genome

Protein Pathways: Metabolic pathways, O-Glycan biosynthesis

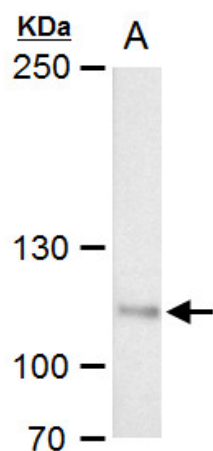
Product images:



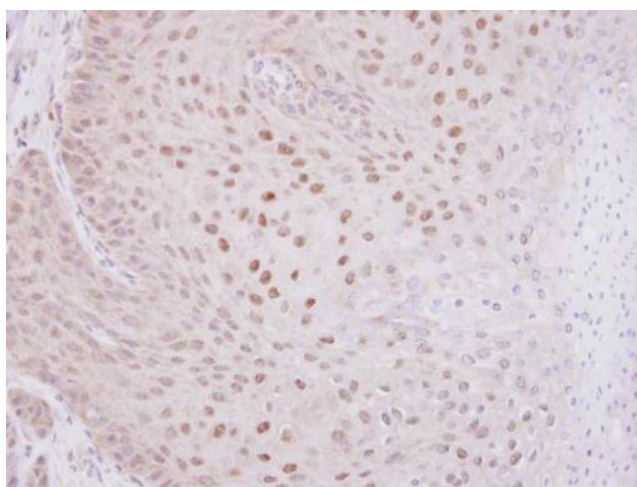
O-GlcNAc transferase antibody detects O-GlcNAc transferase protein by western blot analysis. A. 30 ug 293T whole cell extract. B. 30 ug A431 whole cell extract. C. 30 ug HeLa whole cell extract. D. 30 ug HepG2 whole cell extract. 7.5 % SDS-PAGE. O-GlcNAc



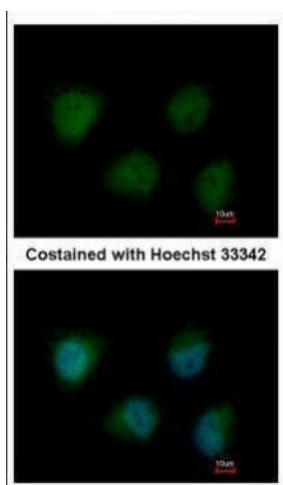
O-GlcNAc transferase antibody detects O-GlcNAc transferase protein by western blot analysis. A. 50 ug mouse brain extract. 5 % SDS-PAGE. O-GlcNAc transferase antibody (TA308359) dilution: 1:1000



O-GlcNAc transferase antibody detects O-GlcNAc transferase protein by western blot analysis. A. 30 ug PC-12 whole cell extract. 5 % SDS-PAGE. O-GlcNAc transferase antibody (TA308359) dilution: 1:1000



Immunohistochemical analysis of paraffin-embedded Cal27 Xenograft, using O-GlcNAc transferase (TA308359) antibody at 1:100 dilution.



Immunofluorescence analysis of paraformaldehyde-fixed HeLa, using O-GlcNAc transferase (TA308359) antibody at 1:200 dilution.