

Product datasheet for **TA308357**

GIPC3 Rabbit Polyclonal Antibody

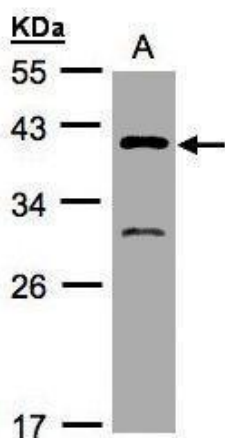
Product data:

| | |
|-------------------------|--|
| Product Type: | Primary Antibodies |
| Applications: | WB |
| Recommended Dilution: | WB:1:500-1:3000 |
| Reactivity: | Human |
| Host: | Rabbit |
| Isotype: | IgG |
| Clonality: | Polyclonal |
| Immunogen: | Synthetic peptide corresponding to a region within amino acids 1 and 44 of GIPC3 (Uniprot ID#Q8TF64) |
| Formulation: | 0.1M Tris, 0.1M Glycine, 10% Glycerol (pH7). 0.01% Thimerosal was added as a preservative. |
| Concentration: | lot specific |
| Purification: | Purified by antigen-affinity chromatography. |
| Conjugation: | Unconjugated |
| Storage: | Store at -20°C as received. |
| Stability: | Stable for 12 months from date of receipt. |
| Predicted Protein Size: | 34 kDa |
| Gene Name: | GIPC PDZ domain containing family member 3 |
| Database Link: | NP_573568 Entrez Gene 126326 Human Q8TF64 |
| Synonyms: | C19orf64; DFNB15; DFNB72; DFNB95 |



[View online »](#)

Product images:



Sample (30 ug of whole cell lysate). A:H1299. 10% SDS PAGE. TA308357 diluted at 1:500