

Product datasheet for **TA308356**

GIPC (GIPC1) Rabbit Polyclonal Antibody

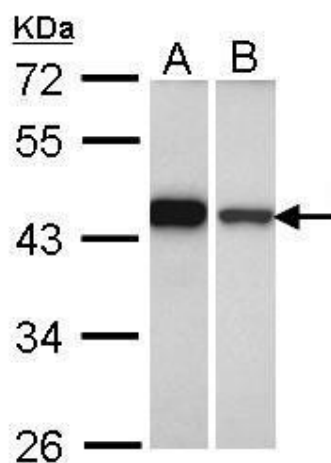
Product data:

Product Type:	Primary Antibodies
Applications:	IHC, WB
Recommended Dilution:	IHC:1:100-1:1000; WB:1:500-1:3000
Reactivity:	Human (Predicted: Mouse, Rat, Zebrafish, Xenopus, Bovine, X. tropicalis)
Host:	Rabbit
Isotype:	IgG
Clonality:	Polyclonal
Immunogen:	Synthetic peptide corresponding to a region within amino acids 273 and 333 of GIPC1
Formulation:	0.1M Tris, 0.1M Glycine, 10% Glycerol (pH7). 0.01% Thimerosal was added as a preservative.
Concentration:	lot specific
Purification:	Purified by antigen-affinity chromatography.
Conjugation:	Unconjugated
Storage:	Store at -20°C as received.
Stability:	Stable for 12 months from date of receipt.
Predicted Protein Size:	36 kDa
Gene Name:	GIPC PDZ domain containing family member 1
Database Link:	NP_974223 Entrez Gene 67903 MouseEntrez Gene 83823 RatEntrez Gene 10755 Human O14908
Background:	GIPC1 is a scaffolding protein that regulates cell surface receptor expression and trafficking (Lee et al., 2008 [PubMed 18775991]). [supplied by OMIM]
Synonyms:	C19orf3; GIPC; GLUT1CBP; Hs.6454; IIP-1; NIP; RGS19IP1; SEMCAP; SYNECTIIN; SYNECTIN; TIP-2
Note:	Seq homology of immunogen across species: Mouse (100%), Rat (100%), Zebrafish (100%), Xenopus laevis (91%), Xenopus Tropicalis (91%), Bovine (100%)
Protein Families:	Druggable Genome

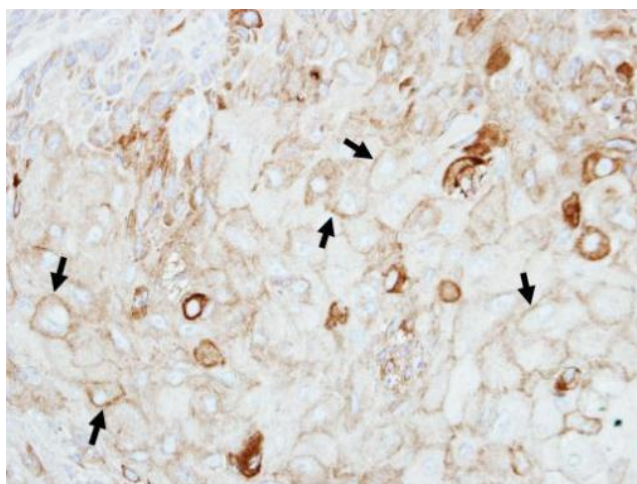


[View online »](#)

Product images:



Sample (30 ug of whole cell lysate). A: A431. B: HeLa. 10% SDS PAGE. TA308356 diluted at 1:1000.



Immunohistochemical analysis of paraffin-embedded SCC4 xenograft, using GIPC1 (TA308356) antibody at 1:100 dilution.