

Product datasheet for **TA308355**

VAM1 (MPP6) Rabbit Polyclonal Antibody

Product data:

| | |
|-------------------------|--|
| Product Type: | Primary Antibodies |
| Applications: | IHC, WB |
| Recommended Dilution: | IHC:1:100-1:1000; WB:1:500-1:3000 |
| Reactivity: | Human (Predicted: Chimpanzee, Rhesus Monkey) |
| Host: | Rabbit |
| Isotype: | IgG |
| Clonality: | Polyclonal |
| Immunogen: | Synthetic peptide corresponding to a region within amino acids 1 and 44 of VAM1 (Uniprot ID#Q9NZW5) |
| Formulation: | 0.1M Tris, 0.1M Glycine, 10% Glycerol (pH7). 0.01% Thimerosal was added as a preservative. |
| Concentration: | lot specific |
| Purification: | Purified by antigen-affinity chromatography. |
| Conjugation: | Unconjugated |
| Storage: | Store at -20°C as received. |
| Stability: | Stable for 12 months from date of receipt. |
| Predicted Protein Size: | 61 kDa |
| Gene Name: | membrane palmitoylated protein 6 |
| Database Link: | NP_057531 Entrez Gene 51678 Human Q9NZW5 |
| Background: | Members of the peripheral membrane-associated guanylate kinase (MAGUK) family function in tumor suppression and receptor clustering by forming multiprotein complexes containing distinct sets of transmembrane, cytoskeletal, and cytoplasmic signaling proteins. All MAGUKs contain a PDZ-SH3-GUK core and are divided into 4 subfamilies, DLG-like (see DLG1; MIM 601014), ZO1-like (see TJP1; MIM 601009), p55-like (see MPP1; MIM 305360), and LIN2-like (see CASK; MIM 300172), based on their size and the presence of additional domains. MPP6 is a member of the p55-like MAGUK subfamily (Tseng et al., 2001 [PubMed 11311936]). [supplied by OMIM] |



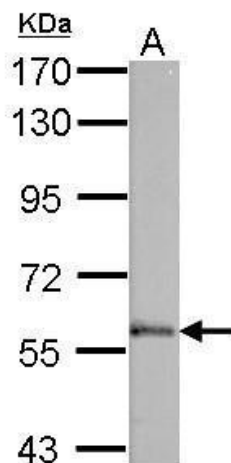
[View online »](#)

Synonyms: p55T; PALS2; VAM-1; VAM1

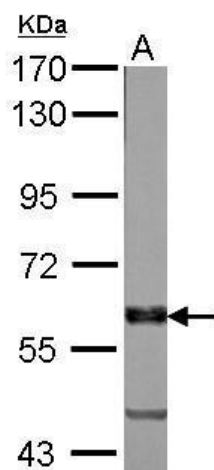
Note: Seq homology of immunogen across species: Rhesus Monkey (100%), Chimpanzee (100%)

Protein Families: Druggable Genome, Stem cell - Pluripotency

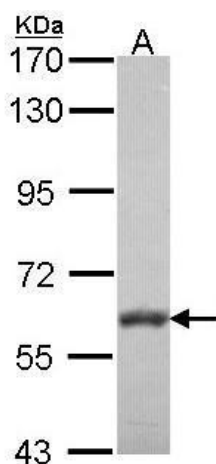
Product images:



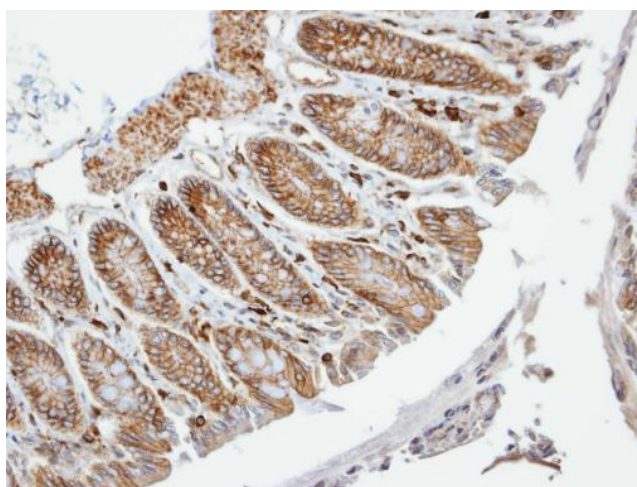
Sample (50 ug of whole cell lysate). A: mouse brain. 7.5% SDS PAGE. TA308355 diluted at 1:1000.



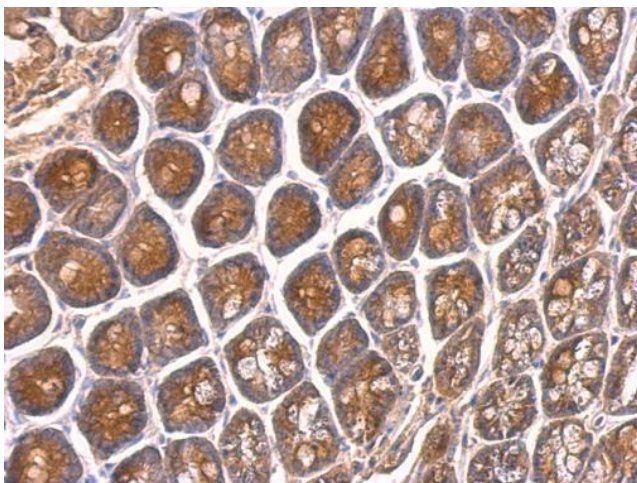
Sample (50 ug of whole cell lysate). A: Rat brain. 7.5% SDS PAGE. TA308355 diluted at 1:1000.



Sample (30 ug of whole cell lysate). A: NT2D1. 7.5% SDS PAGE. TA308355 diluted at 1:1000.



Immunohistochemical analysis of paraffin-embedded Colon, using VAM1 (TA308355) antibody at 1:100 dilution.



VAM1 antibody [N1], N-term detects VAM1 protein at on mouse intestine by immunohistochemical analysis. Sample: Paraffin-embedded mouse intestine. VAM1 antibody [N1], N-term (TA308355) dilution: 1:500.