

## Product datasheet for **TA308353**

### RanBP16 (XPO7) Rabbit Polyclonal Antibody

#### Product data:

Product Type:	Primary Antibodies
Applications:	IHC, WB
Recommended Dilution:	IHC:1:100-1:1000; WB:1:500-1:3000
Reactivity:	Human (Predicted: Mouse, Chicken, Zebrafish, Bovine)
Host:	Rabbit
Isotype:	IgG
Clonality:	Polyclonal
Immunogen:	Recombinant fragment corresponding to a region within amino acids 902 and 1087 of RanBP16 (Uniprot ID#Q9UIA9)
Formulation:	0.1M Tris, 0.1M Glycine, 10% Glycerol (pH7). 0.01% Thimerosal was added as a preservative.
Concentration:	lot specific
Purification:	Purified by antigen-affinity chromatography.
Conjugation:	Unconjugated
Storage:	Store at -20°C as received.
Stability:	Stable for 12 months from date of receipt.
Predicted Protein Size:	124 kDa
Gene Name:	exportin 7
Database Link:	<a href="#">NP_001093632</a> <a href="#">Entrez Gene 65246 Mouse</a> <a href="#">Entrez Gene 23039 Human</a> <a href="#">Q9UIA9</a>
Background:	The transport of protein and large RNAs through the nuclear pore complexes (NPC) is an energy-dependent and regulated process. The import of proteins with a nuclear localization signal (NLS) is accomplished by recognition of one or more clusters of basic amino acids by the importin-alpha/beta complex; see MIM 600685 and MIM 602738. The small GTPase RAN (MIM 601179) plays a key role in NLS-dependent protein import. RAN-binding protein-16 is a member of the importin-beta superfamily of nuclear transport receptors. [supplied by OMIM]
Synonyms:	exportin 7; KIAA0745; RAN binding protein 16; RANBP16

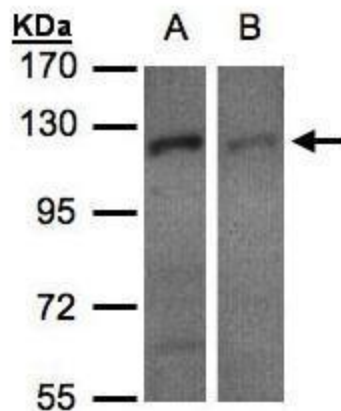


[View online »](#)

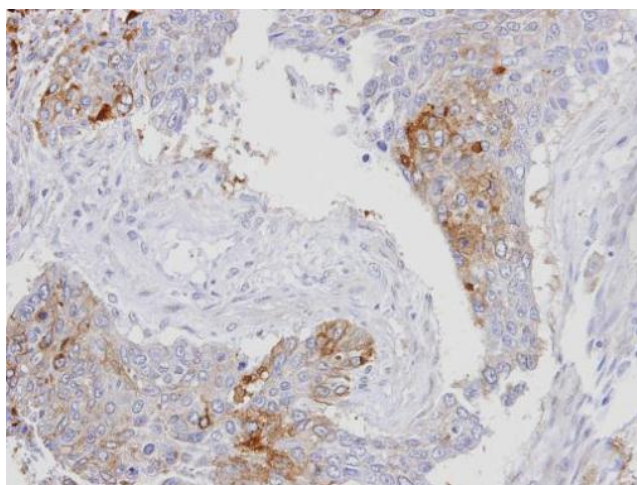
**Note:** Seq homology of immunogen across species: Mouse (97%), Chicken (98%), Zebrafish (95%), Bovine (99%)

**Protein Families:** Druggable Genome

**Product images:**



Sample (30 ug of whole cell lysate). A:H1299.  
B:HeLa S3. 7.5% SDS PAGE. TA308353 diluted at 1:500



Immunohistochemical analysis of paraffin-embedded lung SCC, using RanBP16 (TA308353) antibody at 1:100 dilution.