

## Product datasheet for **TA308352**

### HADHB Rabbit Polyclonal Antibody

#### Product data:

Product Type:	Primary Antibodies
Applications:	WB
Recommended Dilution:	WB:1:500-1:3000
Reactivity:	Human (Predicted: Chimpanzee)
Host:	Rabbit
Isotype:	IgG
Clonality:	Polyclonal
Immunogen:	Synthetic peptide corresponding to a region within amino acids 1 and 43 of HADHB (Uniprot ID#P55084)
Formulation:	1XPBS, 20% Glycerol (pH7). 0.01% Thimerosal was added as a preservative.
Concentration:	lot specific
Purification:	Purified by antigen-affinity chromatography.
Conjugation:	Unconjugated
Storage:	Store at -20°C as received.
Stability:	Stable for 12 months from date of receipt.
Predicted Protein Size:	51 kDa
Gene Name:	hydroxyacyl-CoA dehydrogenase/3-ketoacyl-CoA thiolase/enoyl-CoA hydratase (trifunctional protein), beta subunit
Database Link:	<a href="#">NP_000174</a> <a href="#">Entrez Gene 3032 Human P55084</a>



[View online »](#)

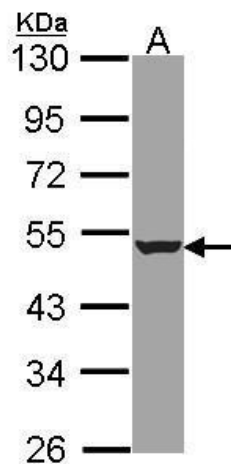
**Background:** This gene encodes the beta subunit of the mitochondrial trifunctional protein, which catalyzes the last three steps of mitochondrial beta-oxidation of long chain fatty acids. The mitochondrial membrane-bound heterocomplex is composed of four alpha and four beta subunits, with the beta subunit catalyzing the 3-ketoacyl-CoA thiolase activity. Mutations in this gene result in trifunctional protein deficiency. The encoded protein can also bind RNA and decreases the stability of some mRNAs. The genes of the alpha and beta subunits of the mitochondrial trifunctional protein are located adjacent to each other in the human genome in a head-to-head orientation. Alternatively spliced transcript variants have been found; however, their full-length nature is not known. [provided by RefSeq]

**Synonyms:** ECHB; MSTP029; MTPB; TP-BETA

**Note:** Seq homology of immunogen across species: Chimpanzee (100%)

**Protein Pathways:** Fatty acid elongation in mitochondria, Fatty acid metabolism, Metabolic pathways, Valine, leucine and isoleucine degradation

**Product images:**



Sample (30 ug of whole cell lysate). A: A431. 10% SDS PAGE. HADHB antibody, TA308352 diluted at 1:1000.