

Product datasheet for **TA308351**

SH3BP1 Rabbit Polyclonal Antibody

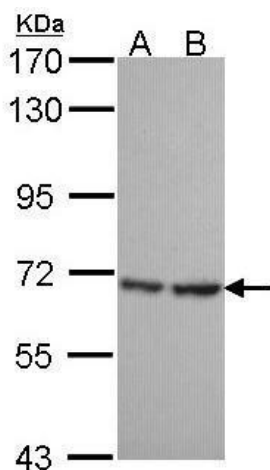
Product data:

Product Type:	Primary Antibodies
Applications:	IF, IHC, WB
Recommended Dilution:	ICC/IF:1:100-1:1000; IHC:1:100-1:1000; WB:1:500-1:3000
Reactivity:	Human
Host:	Rabbit
Isotype:	IgG
Clonality:	Polyclonal
Immunogen:	Synthetic peptide corresponding to a region within amino acids 639 and 701 of SH3BP1
Formulation:	0.1M Tris, 0.1M Glycine, 10% Glycerol (pH7). 0.01% Thimerosal was added as a preservative.
Purification:	Purified by antigen-affinity chromatography.
Conjugation:	Unconjugated
Storage:	Store at -20°C as received.
Stability:	Stable for 12 months from date of receipt.
Predicted Protein Size:	76 kDa
Gene Name:	SH3 domain binding protein 1
Database Link:	NP_061830 Entrez Gene 23616 Human Q9Y3L3
Synonyms:	ARHGAP43

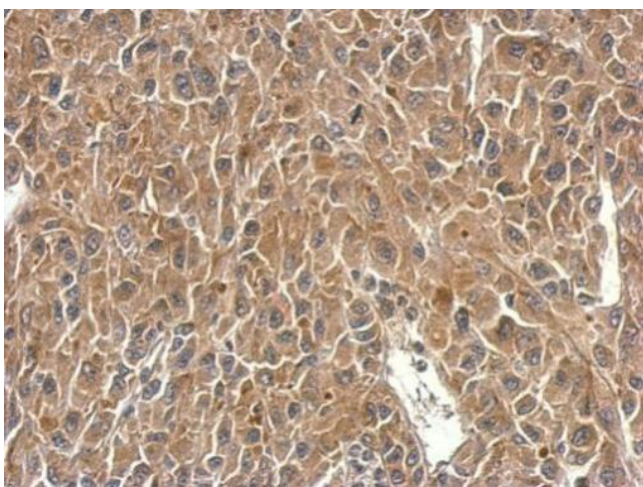


[View online »](#)

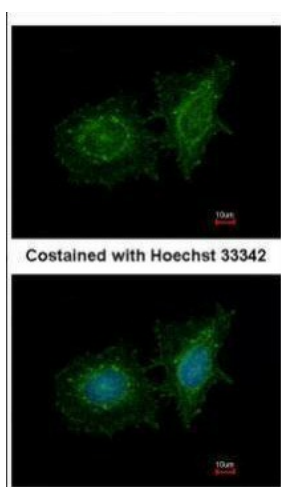
Product images:



Sample (30 ug of whole cell lysate). A: HeLa. B: JurKat. 7.5% SDS PAGE. TA308351 diluted at 1:1000.



SH3BP1 antibody detects SH3BP1 protein at cytosol on U87 xenograft by immunohistochemical analysis. Sample: Paraffin-embedded U87 xenograft. SH3BP1 antibody (TA308351) dilution: 1:500.



Immunofluorescence analysis of methanol-fixed HeLa, using SH3BP1 (TA308351) antibody at 1:200 dilution.