

Product datasheet for **TA308346**

TCP1 beta (CCT2) Rabbit Polyclonal Antibody

Product data:

Product Type:	Primary Antibodies
Applications:	IHC, WB
Recommended Dilution:	IHC:1:100-1:1000; WB:1:500-1:3000
Reactivity:	Human, Mouse (Predicted: Pig, Rabbit, Chimpanzee, Rhesus Monkey)
Host:	Rabbit
Isotype:	IgG
Clonality:	Polyclonal
Immunogen:	Recombinant fragment corresponding to a region within amino acids 277 and 503 of TCP1 beta (Uniprot ID#P78371)
Formulation:	0.1M Tris, 0.1M Glycine, 10% Glycerol (pH7). 0.01% Thimerosal was added as a preservative.
Concentration:	lot specific
Purification:	Purified by antigen-affinity chromatography.
Conjugation:	Unconjugated
Storage:	Store at -20°C as received.
Stability:	Stable for 12 months from date of receipt.
Predicted Protein Size:	58 kDa
Gene Name:	chaperonin containing TCP1 subunit 2
Database Link:	NP_006422 Entrez Gene 12461 Mouse Entrez Gene 10576 Human P78371
Background:	This gene encodes a molecular chaperone that is member of the chaperonin containing TCP1 complex (CCT), also known as the TCP1 ring complex (TRiC). This complex consists of two identical stacked rings, each containing eight different proteins. Unfolded polypeptides enter the central cavity of the complex and are folded in an ATP-dependent manner. The complex folds various proteins, including actin and tubulin. Alternate transcriptional splice variants of the gene described in this record have been observed but have not been thoroughly characterized. [provided by RefSeq]
Synonyms:	99D8.1; CCT-beta; CCTB; HEL-S-100n; PRO1633; TCP-1-beta

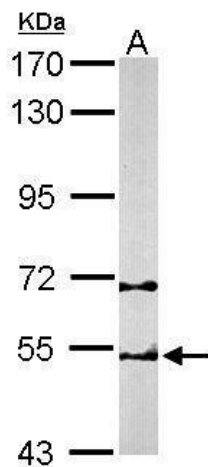


[View online »](#)

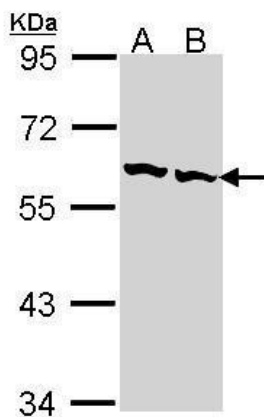
Note: Seq homology of immunogen across species: Pig (100%), Rabbit (100%), Rhesus Monkey (100%), Chimpanzee (100%)

Protein Families: Druggable Genome

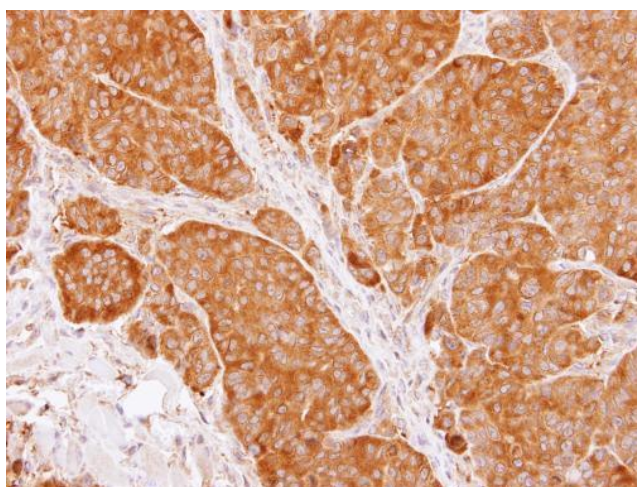
Product images:



Sample (50 ug of whole cell lysate). A: Mouse brain. 7.5% SDS PAGE. TA308346 diluted at 1:1000.



Sample (30 ug of whole cell lysate). A: Hep G2. B: Raji. 7.5% SDS PAGE. TA308346 diluted at 1:1000.



Immunohistochemical analysis of paraffin-embedded SW480 xenograft, using TCP1 beta (TA308346) antibody at 1:100 dilution.