

Product datasheet for **TA308344**

SMAD9 Rabbit Polyclonal Antibody

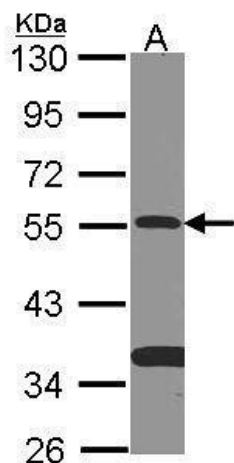
Product data:

Product Type:	Primary Antibodies
Applications:	IF, WB
Recommended Dilution:	ICC/IF:1:100-1:1000; WB:1:500-1:3000
Reactivity:	Human (Predicted: Rhesus Monkey)
Host:	Rabbit
Isotype:	IgG
Clonality:	Polyclonal
Immunogen:	Recombinant protein fragment contain a sequence corresponding to a region within amino acids 166 and 430 of SMAD9
Formulation:	0.1M Tris, 0.1M Glycine, 20% Glycerol (pH7). 0.01% Thimerosal was added as a preservative.
Concentration:	lot specific
Purification:	Purified by antigen-affinity chromatography.
Conjugation:	Unconjugated
Storage:	Store at -20°C as received.
Stability:	Stable for 12 months from date of receipt.
Predicted Protein Size:	49 kDa
Gene Name:	SMAD family member 9
Database Link:	NP_001120689 Entrez Gene 4093 Human Q15198
Background:	SMAD family members, such as SMAD9, transduce signals from members of the TGF-beta (see TGFB1; MIM 190180) superfamily, which regulate growth, differentiation, apoptosis, and development (Nishita et al., 1999 [PubMed 10583507]). [supplied by OMIM]
Synonyms:	MADH6; MADH9; PPH2; SMAD8; SMAD8A; SMAD8B
Note:	Seq homology of immunogen across species: Rhesus Monkey (100%)
Protein Families:	ES Cell Differentiation/IPS, Transcription Factors
Protein Pathways:	TGF-beta signaling pathway

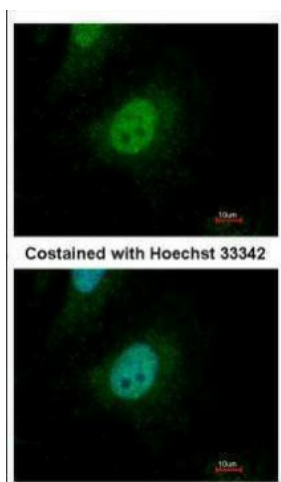


[View online »](#)

Product images:



Sample (30 ug of whole cell lysate). A: NT2D1. 10% SDS PAGE. TA308344 diluted at 1:500.



Immunofluorescence analysis of paraformaldehyde-fixed HeLa, using SMAD9 (TA308344) antibody at 1:500 dilution.