

Product datasheet for **TA308343**

AP2M1 Rabbit Polyclonal Antibody

Product data:

Product Type:	Primary Antibodies
Applications:	IHC, WB
Recommended Dilution:	IHC:1:100-1:1000; WB:1:500-1:3000
Reactivity:	Human (Predicted: Mouse, Rat, Bovine)
Host:	Rabbit
Isotype:	IgG
Clonality:	Polyclonal
Immunogen:	Recombinant fragment contain a sequence corresponding to a region within amino acids 1 and 150 of AP2M1 (Uniprot ID#Q96CW1)
Formulation:	0.1M Tris, 0.1M Glycine, 10% Glycerol (pH7). 0.01% Thimerosal was added as a preservative.
Concentration:	lot specific
Purification:	Purified by antigen-affinity chromatography.
Conjugation:	Unconjugated
Storage:	Store at -20°C as received.
Stability:	Stable for 12 months from date of receipt.
Predicted Protein Size:	50 kDa
Gene Name:	adaptor related protein complex 2 mu 1 subunit
Database Link:	NP_001020376 Entrez Gene 11773 Mouse Entrez Gene 116563 Rat Entrez Gene 1173 Human Q96CW1
Background:	This gene encodes a subunit of the heterotetrameric coat assembly protein complex 2 (AP2), which belongs to the adaptor complexes medium subunits family. The encoded protein is required for the activity of a vacuolar ATPase, which is responsible for proton pumping occurring in the acidification of endosomes and lysosomes. The encoded protein may also play an important role in regulating the intracellular trafficking and function of CTLA-4 protein. Two transcript variants encoding different isoforms have been found for this gene. [provided by RefSeq]
Synonyms:	AP50; CLAPM1; mu2



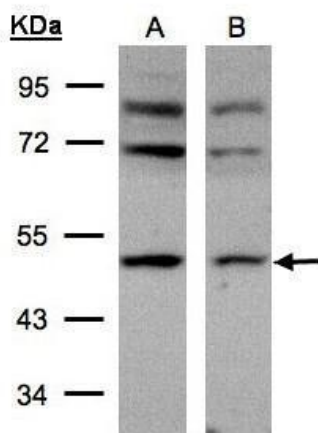
[View online »](#)

Note: Seq homology of immunogen across species: Mouse (100%), Rat (100%), Bovine (100%)

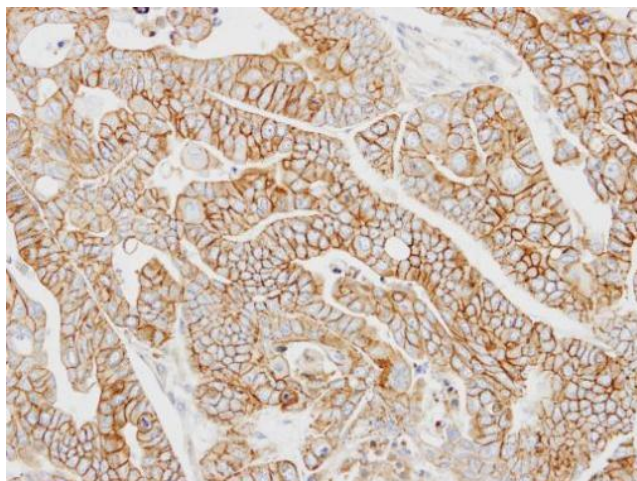
Protein Families: Druggable Genome

Protein Pathways: Endocytosis, Huntington's disease

Product images:



Sample (30 ug of whole cell lysate). A:293T.
B:HeLa S3. 10% SDS PAGE. TA308343 diluted at 1:500



Immunohistochemical analysis of paraffin-embedded N87 xenograft, using AP2M1 (TA308343) antibody at 1:100 dilution.