

## Product datasheet for **TA308342**

### Cofilin 2 (CFL2) Rabbit Polyclonal Antibody

#### Product data:

Product Type:	Primary Antibodies
Applications:	IF, IHC, WB
Recommended Dilution:	ICC/IF:1:100-1:1000; IHC:1:100-1:1000; WB:1:500-1:3000
Reactivity:	Human (Predicted: Rat, Pig, Chicken, Bovine, Rhesus Monkey, Mouse)
Host:	Rabbit
Isotype:	IgG
Clonality:	Polyclonal
Immunogen:	Synthetic peptide corresponding to a region within amino acids 92 and 166 of Cofilin 2
Formulation:	1XPBS, 20% Glycerol (pH7). 0.01% Thimerosal was added as a preservative.
Concentration:	lot specific
Purification:	Purified by antigen-affinity chromatography.
Conjugation:	Unconjugated
Storage:	Store at -20°C as received.
Stability:	Stable for 12 months from date of receipt.
Predicted Protein Size:	19 kDa
Gene Name:	cofilin 2
Database Link:	<a href="#">NP_068733</a> <a href="#">Entrez Gene 12632 Mouse</a> <a href="#">Entrez Gene 366624 Rat</a> <a href="#">Entrez Gene 1073 Human</a> <a href="#">Q9Y281</a>
Background:	Cofilin is a widely distributed intracellular actin-modulating protein that binds and depolymerizes filamentous F-actin and inhibits the polymerization of monomeric G-actin in a pH-dependent manner. (Gillett et al., 1996 [PubMed 8800436]). Cofilin-2 is a member of the AC group of proteins that also includes cofilin-1 (CFL1) and destrin (DSTN; MIM 609114), all of which regulate actin-filament dynamics (Bamburg et al., 1999 [PubMed 10461190]; Maciver and Hussey, 2002). The CFL2 gene encodes a skeletal muscle-specific isoform (Vartiainen et al., 2002 [PubMed 11809832]) localized to the thin filaments, where it exerts its effect on actin, in part through interactions with tropomyosins (Ono and Ono, 2002 [PubMed 11901171]). [supplied by OMIM]



[View online »](#)

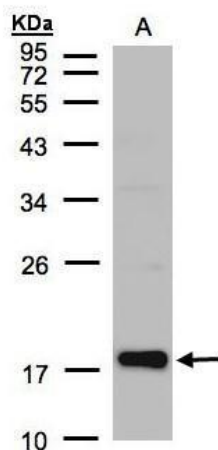
**Synonyms:** NEM7

**Note:** Seq homology of immunogen across species: Mouse (100%), Rat (100%), Pig (100%), Chicken (100%), Rhesus Monkey (100%), Bovine (100%)

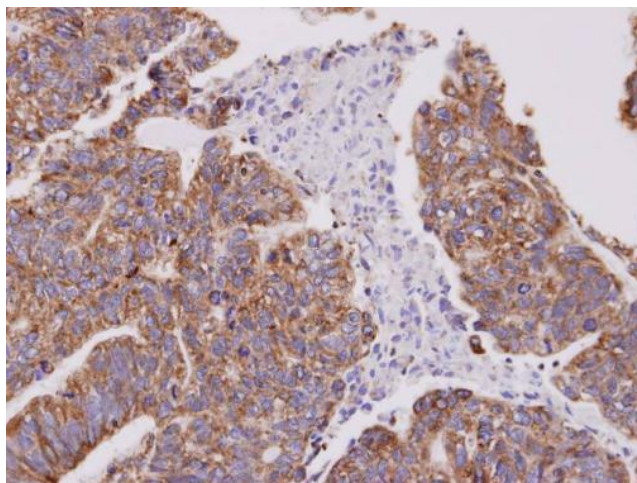
**Protein Families:** Druggable Genome

**Protein Pathways:** Axon guidance, Fc gamma R-mediated phagocytosis, Regulation of actin cytoskeleton

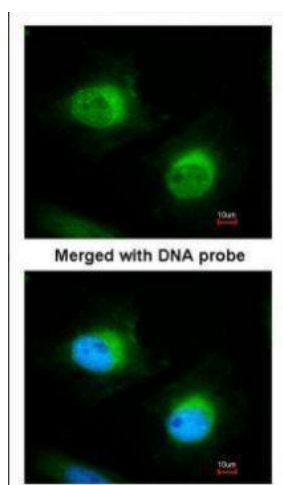
**Product images:**



Sample (30 ug of whole cell lysate). A:Raji. 12% SDS PAGE. TA308342 diluted at 1:1000



Immunohistochemical analysis of paraffin-embedded gastric CA, using Cofilin 2 (TA308342) antibody at 1:100 dilution.



Immunofluorescence analysis of paraformaldehyde-fixed HeLa, using Cofilin 2 (TA308342) antibody at 1:200 dilution.