

Product datasheet for **TA308341**

CARHSP1 Rabbit Polyclonal Antibody

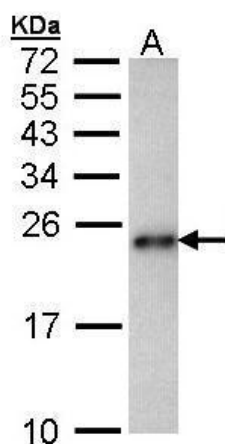
Product data:

Product Type:	Primary Antibodies
Applications:	IHC, WB
Recommended Dilution:	IHC:1:100-1:1000; WB:1:500-1:3000
Reactivity:	Human (Predicted: Rat)
Host:	Rabbit
Isotype:	IgG
Clonality:	Polyclonal
Immunogen:	Recombinant fragment corresponding to a region within amino acids 1 and 147 of CRHSP-24 (Uniprot ID#Q9Y2V2)
Formulation:	1XPBS, 10% Glycerol (pH7). 0.01% Thimerosal was added as a preservative.
Concentration:	lot specific
Purification:	Purified by antigen-affinity chromatography.
Conjugation:	Unconjugated
Storage:	Store at -20°C as received.
Stability:	Stable for 12 months from date of receipt.
Predicted Protein Size:	16 kDa
Gene Name:	calcium regulated heat stable protein 1
Database Link:	NP_001035941 Entrez Gene 260416 Rat Entrez Gene 23589 Human Q9Y2V2
Synonyms:	CRHSP-24; CRHSP24; CSDC1
Note:	Seq homology of immunogen across species: Rat (96%)
Protein Families:	Transcription Factors

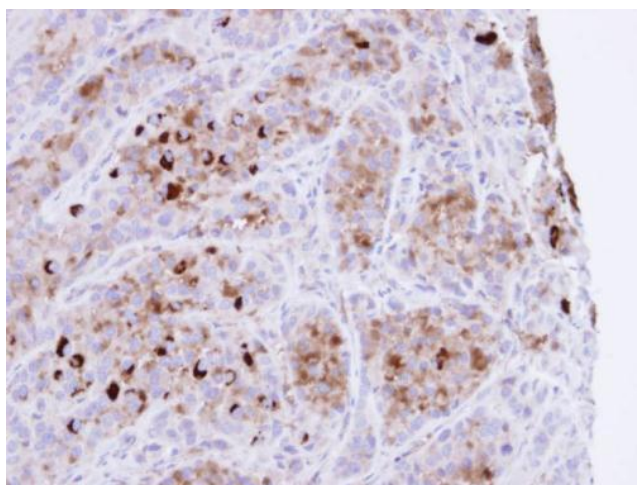


[View online »](#)

Product images:



Sample (30 ug of whole cell lysate). A: Hep G2. 15% SDS PAGE. TA308341 diluted at 1:1000.



Immunohistochemical analysis of paraffin-embedded A549 xenograft, using CRHSP-24 (TA308341) antibody at 1:100 dilution.