

Product datasheet for **TA308340**

Profilin 2 (PFN2) Rabbit Polyclonal Antibody

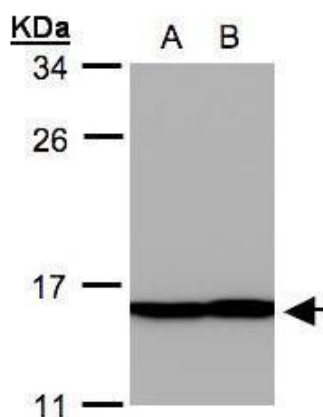
Product data:

Product Type:	Primary Antibodies
Applications:	IHC, WB
Recommended Dilution:	IHC:1:100-1:1000; WB:1:500-1:3000
Reactivity:	Human, Mouse
Host:	Rabbit
Isotype:	IgG
Clonality:	Polyclonal
Immunogen:	Recombinant protein fragment contain a sequence corresponding to a region within amino acids 1 and 90 of Profilin 2
Formulation:	0.1M Tris, 0.1M Glycine, 10% Glycerol (pH7). 0.01% Thimerosal was added as a preservative.
Concentration:	lot specific
Purification:	Purified by antigen-affinity chromatography.
Conjugation:	Unconjugated
Storage:	Store at -20°C as received.
Stability:	Stable for 12 months from date of receipt.
Predicted Protein Size:	15 kDa
Gene Name:	profilin 2
Database Link:	NP_444252 Entrez Gene 18645 Mouse Entrez Gene 5217 Human P35080
Background:	The protein encoded by this gene is a ubiquitous actin monomer-binding protein belonging to the profilin family. It is thought to regulate actin polymerization in response to extracellular signals. There are two alternatively spliced transcript variants encoding different isoforms described for this gene. [provided by RefSeq]
Synonyms:	D3S1319E; PFL
Protein Families:	Druggable Genome
Protein Pathways:	Regulation of actin cytoskeleton

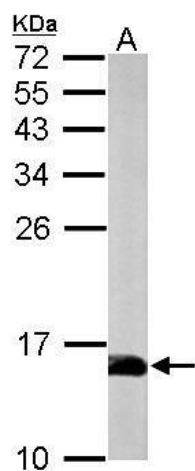


[View online »](#)

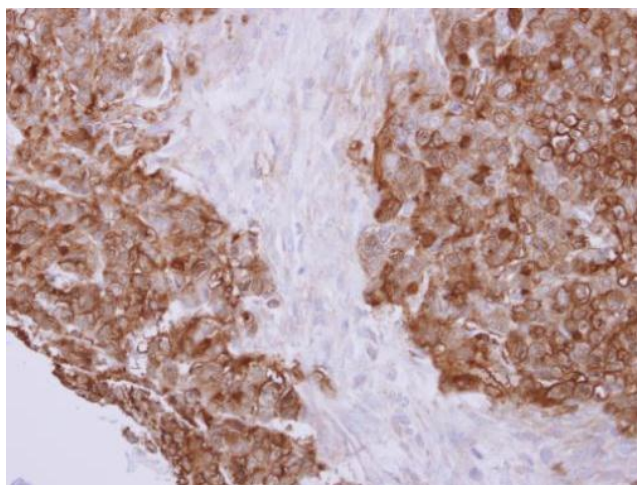
Product images:



Sample (30 ug whole cell lysate). A: A431. B: H1299. 12% SDS PAGE. TA308340 diluted at 1:500



Sample (50 ug of whole cell lysate). A: mouse brain. 15% SDS PAGE. TA308340 diluted at 1:1000.



Profilin 2 antibody detects PFN2 protein at cytoplasm on colon carcinoma by immunohistochemical analysis. Sample: Paraffin-embedded colon carcinoma. Profilin 2 antibody (TA308340) dilution: 1:500.