

Product datasheet for **TA308338**

Pleckstrin (PLEK) Rabbit Polyclonal Antibody

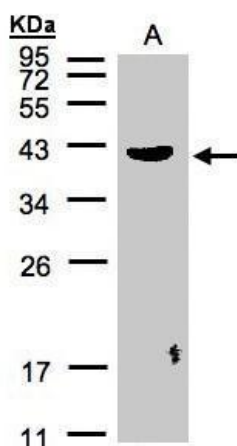
Product data:

Product Type:	Primary Antibodies
Applications:	IF, WB
Recommended Dilution:	ICC/IF:1:100-1:1000; WB:1:500-1:3000
Reactivity:	Human (Predicted: Mouse, Rat, Dog, Bovine)
Host:	Rabbit
Isotype:	IgG
Clonality:	Polyclonal
Immunogen:	Synthetic peptide contain a sequence corresponding to a region within amino acids 287 and 300 of Pleckstrin
Formulation:	0.1M Tris, 0.1M Glycine, 10% Glycerol (pH7). 0.01% Thimerosal was added as a preservative.
Concentration:	lot specific
Purification:	Purified by antigen-affinity chromatography.
Conjugation:	Unconjugated
Storage:	Store at -20°C as received.
Stability:	Stable for 12 months from date of receipt.
Predicted Protein Size:	40 kDa
Gene Name:	pleckstrin
Database Link:	NP_002655 Entrez Gene 56193 MouseEntrez Gene 364206 RatEntrez Gene 442956 DogEntrez Gene 5341 Human P08567
Synonyms:	P47
Note:	Seq homology of immunogen across species: Mouse (93%), Rat (93%), Dog (93%), Bovine (93%)
Protein Families:	Druggable Genome

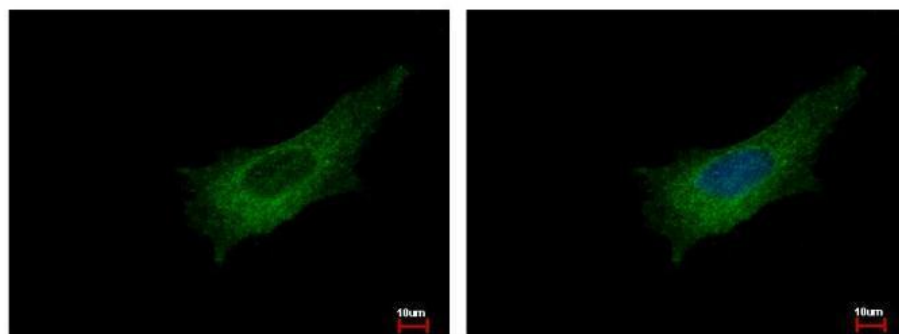


[View online »](#)

Product images:



Sample (30 ug of whole cell lysate). A:Raji. 12% SDS PAGE. TA308338 diluted at 1:500



Pleckstrin antibody [C2C3], C-term detects PLEK protein at cytoplasm by immunofluorescent analysis. Sample: HeLa cells were fixed in -20°C 100% MeOH for 5 min. Green: PLEK protein stained by Pleckstrin antibody [C2C3], C-term (TA308338) diluted at 1:500.