

Product datasheet for **TA308336**

IL22 RA2 (IL22RA2) Rabbit Polyclonal Antibody

Product data:

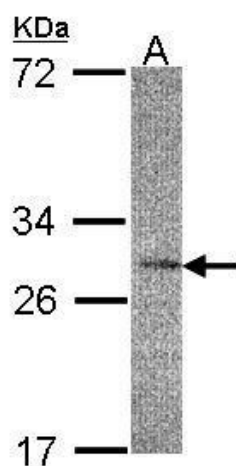
Product Type:	Primary Antibodies
Applications:	IHC, WB
Recommended Dilution:	IHC:1:100-1:1000; WB:1:100-1:1000
Reactivity:	Human
Host:	Rabbit
Isotype:	IgG
Clonality:	Polyclonal
Immunogen:	Recombinant protein fragment contain a sequence corresponding to a region within amino acids 1 and 218 of IL22 Receptor alpha 2
Formulation:	0.1M Tris, 0.1M Glycine, 10% Glycerol (pH7). 0.01% Thimerosal was added as a preservative.
Concentration:	lot specific
Purification:	Purified by antigen-affinity chromatography.
Conjugation:	Unconjugated
Storage:	Store at -20°C as received.
Stability:	Stable for 12 months from date of receipt.
Predicted Protein Size:	27 kDa
Gene Name:	interleukin 22 receptor subunit alpha 2
Database Link:	NP_851827 Entrez Gene 116379 Human Q969J5
Background:	The protein encoded by this gene is a soluble class II cytokine receptor. This protein has been shown to specifically bind to interleukin 22 (IL22), block the interaction of IL22 with its cell surface receptor, and thus inhibit IL22 activity. This protein functions as an IL22 antagonist, and may be important in the regulation of inflammatory response. Three alternatively spliced transcript variants encoding distinct isoforms have been described. [provided by RefSeq]
Synonyms:	CRF2-10; CRF2-S1; CRF2X; IL-22BP; IL-22R-alpha-2; IL-22RA2; ZCYTOR16
Protein Families:	Druggable Genome, Secreted Protein



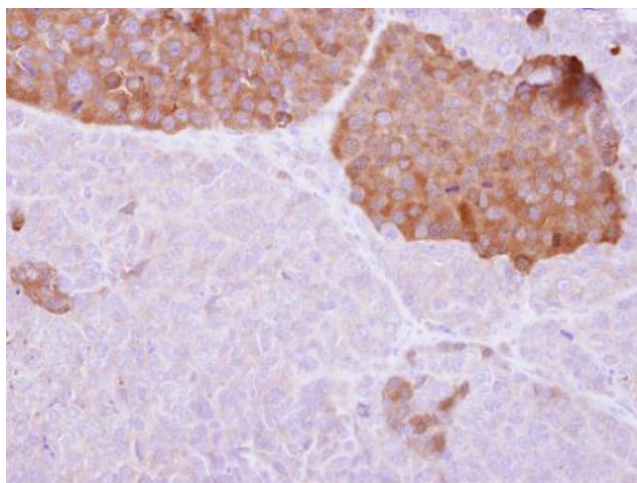
[View online »](#)

Protein Pathways: Cytokine-cytokine receptor interaction, Jak-STAT signaling pathway

Product images:



Sample (30 ug of whole cell lysate). A:HeLa S3.
12% SDS PAGE. TA308336 diluted at 1:200



IL22 Receptor alpha 2 antibody detects IL22RA2 protein at cytosol on PC14 xenograft by immunohistochemical analysis. Sample: Paraffin-embedded PC14 xenograft. IL22 Receptor alpha 2 antibody (TA308336) dilution: 1:250.