

Product datasheet for **TA308334**

HPS3 Rabbit Polyclonal Antibody

Product data:

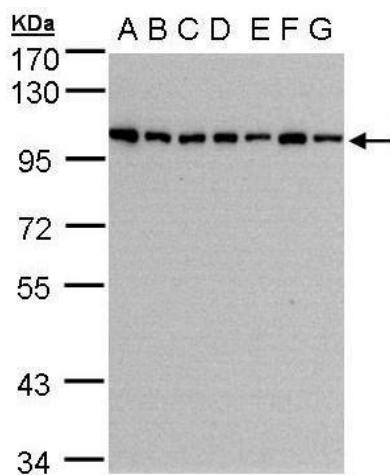
Product Type:	Primary Antibodies
Applications:	IF, IHC, WB
Recommended Dilution:	ICC/IF:1:100-1:1000; IHC:1:100-1:1000; WB:1:500-1:3000
Reactivity:	Human (Predicted: Pig, Bovine)
Host:	Rabbit
Isotype:	IgG
Clonality:	Polyclonal
Immunogen:	Synthetic peptide corresponding to a region within amino acids 942 and 1004 of HPS3 (Uniprot ID#Q969F9)
Formulation:	0.1M Tris, 0.1M Glycine, 10% Glycerol (pH7). 0.01% Thimerosal was added as a preservative.
Concentration:	lot specific
Purification:	Purified by antigen-affinity chromatography.
Conjugation:	Unconjugated
Storage:	Store at -20°C as received.
Stability:	Stable for 12 months from date of receipt.
Predicted Protein Size:	114 kDa
Gene Name:	HPS3, biogenesis of lysosomal organelles complex 2 subunit 1
Database Link:	NP_115759 Entrez Gene 84343 Human Q969F9
Background:	This gene encodes a protein containing a potential clathrin-binding motif, consensus dileucine signals, and tyrosine-based sorting signals for targeting to vesicles of lysosomal lineage. The encoded protein may play a role in organelle biogenesis associated with melanosomes, platelet dense granules, and lysosomes. Mutations in this gene are associated with Hermansky-Pudlak syndrome type 3. Alternate splice variants exist, but their full length sequence has not been determined. [provided by RefSeq]
Synonyms:	BLOC2S1; SUTAL



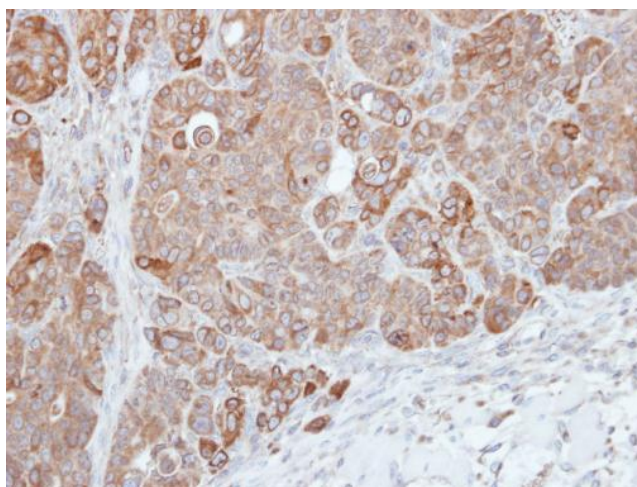
[View online »](#)

Note: Seq homology of immunogen across species: Pig (92%), Bovine (92%)

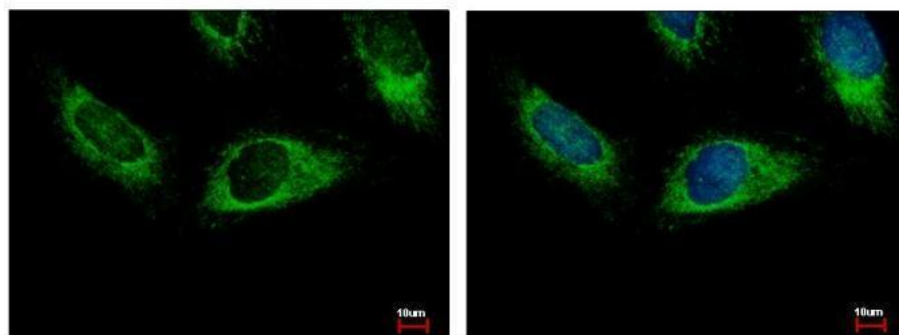
Product images:



Sample (30 ug of whole cell lysate). A:293T. B:A431. C:H1299. D:HeLa S3. E:Hep G2. F:MOLT4. G:Raji. 7.5% SDS PAGE. TA308334 diluted at 1:1000



Immunohistochemical analysis of paraffin-embedded SW480 xenograft, using HPS3 (TA308334) antibody at 1:500 dilution.



HPS3 antibody [C3], C-term detects HPS3 protein at cytoplasm by immunofluorescent analysis. Sample: HeLa cells were fixed in 4% paraformaldehyde at RT for 15 min. Green: HPS3 protein stained by HPS3 antibody [C3], C-term (TA308334) diluted at 1:500. Blue: