

Product datasheet for **TA308333**

CLPP Rabbit Polyclonal Antibody

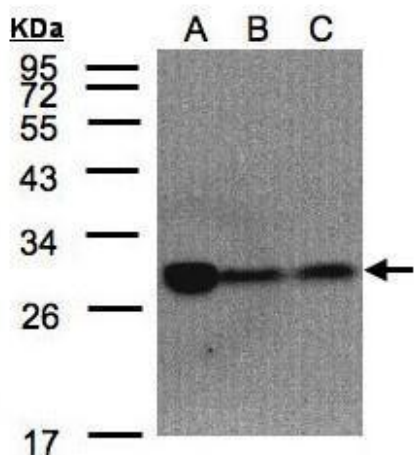
Product data:

Product Type:	Primary Antibodies
Applications:	IHC, WB
Recommended Dilution:	IHC:1:100-1:1000; WB:1:500-1:3000
Reactivity:	Human
Host:	Rabbit
Isotype:	IgG
Clonality:	Polyclonal
Immunogen:	Synthetic peptide corresponding to a region within amino acids 215 and 277 of CLPP (Uniprot ID#Q16740)
Formulation:	1XPBS, 10% Glycerol (pH7). 0.01% Thimerosal was added as a preservative.
Concentration:	lot specific
Purification:	Purified by antigen-affinity chromatography.
Conjugation:	Unconjugated
Storage:	Store at -20°C as received.
Stability:	Stable for 12 months from date of receipt.
Predicted Protein Size:	30 kDa
Gene Name:	caseinolytic mitochondrial matrix peptidase proteolytic subunit
Database Link:	NP_006003 Entrez Gene 8192 Human Q16740
Background:	The protein encoded by this gene belongs to the peptidase family S14 and hydrolyzes proteins into small peptides in the presence of ATP and magnesium. The protein is transported into mitochondrial matrix and is associated with the inner mitochondrial membrane. [provided by RefSeq]
Synonyms:	DFNB81; PRLTS3
Protein Families:	Druggable Genome, Protease

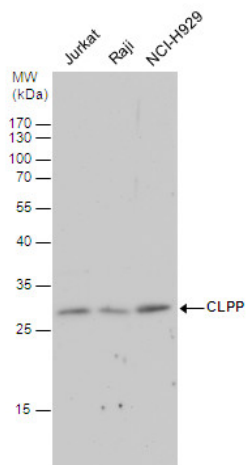


[View online »](#)

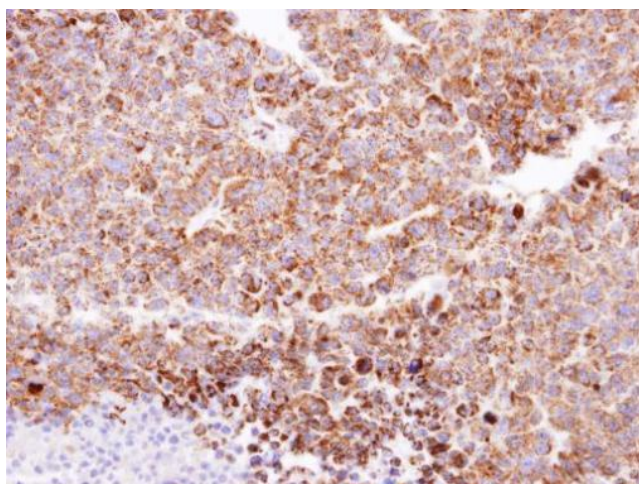
Product images:



Sample (30 ug of whole cell lysate). A:293T. B:A431. C:H1299. 10% SDS PAGE. TA308333 diluted at 1:1500



CLPP antibody detects CLPP protein by western blot analysis. Various whole cell extracts (30 ug) were separated by 12% SDS-PAGE, and the membrane was blotted with CLPP antibody (TA308333) diluted by 1:500.



Immunohistochemical analysis of paraffin-embedded H520 xenograft, using CLPP (TA308333) antibody at 1:100 dilution.

