

Product datasheet for **TA308331**

STK25 Rabbit Polyclonal Antibody

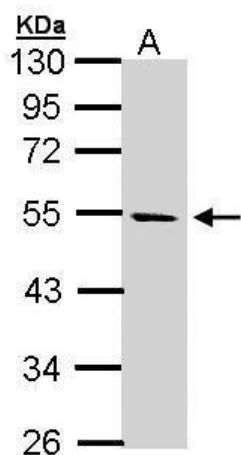
Product data:

Product Type:	Primary Antibodies
Applications:	IF, IHC, WB
Recommended Dilution:	ICC/IF:1:100-1:1000; IHC:1:100-1:1000; WB:1:500-1:3000
Reactivity:	Human (Predicted: Mouse, Chicken, Rat, Bovine)
Host:	Rabbit
Isotype:	IgG
Clonality:	Polyclonal
Immunogen:	Recombinant fragment corresponding to a region within amino acids 1 and 231 of STK25 (Uniprot ID#O00506)
Formulation:	0.1M Tris, 0.1M Glycine, 10% Glycerol (pH7). 0.01% Thimerosal was added as a preservative.
Concentration:	lot specific
Purification:	Purified by antigen-affinity chromatography.
Conjugation:	Unconjugated
Storage:	Store at -20°C as received.
Stability:	Stable for 12 months from date of receipt.
Predicted Protein Size:	48 kDa
Gene Name:	serine/threonine kinase 25
Database Link:	NP_006365 Entrez Gene 59041 Mouse Entrez Gene 373542 Rat Entrez Gene 10494 Human O00506
Synonyms:	SOK1; YSK1
Note:	Seq homology of immunogen across species: Mouse (99%), Chicken (97%), Rat (99%), Bovine (99%)
Protein Families:	Druggable Genome, Protein Kinase

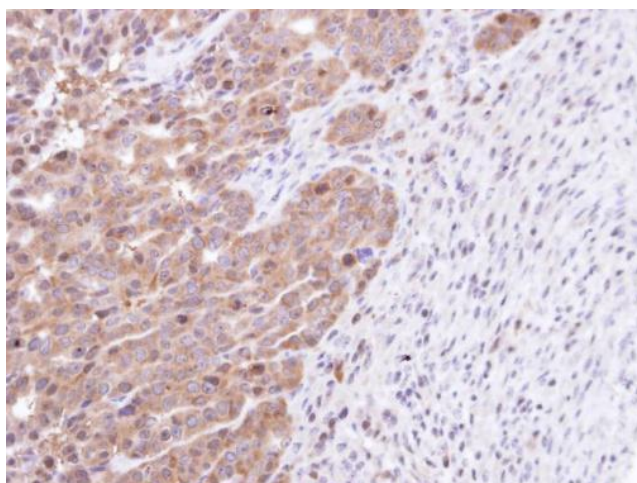


[View online »](#)

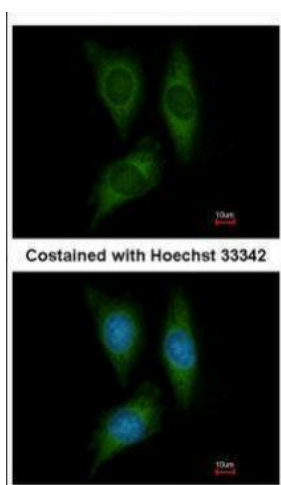
Product images:



Sample (30 ug of whole cell lysate). A: HeLa S3.
10% SDS PAGE. TA308331 diluted at 1:1000



Immunohistochemical analysis of paraffin-
embedded NCIN87 xenograft, using STK25
(TA308331) antibody at 1:100 dilution.



Immunofluorescence analysis of methanol-fixed HeLa, using STK25 (TA308331) antibody at 1:200 dilution.