

Product datasheet for **TA308330**

Importin 7 (IPO7) Rabbit Polyclonal Antibody

Product data:

Product Type:	Primary Antibodies
Applications:	IF, IHC, WB
Recommended Dilution:	ICC/IF:1:100-1:1000; IHC:1:100-1:1000; WB:1:500-1:3000
Reactivity:	Human (Predicted: Mouse, Rat, Zebrafish, Xenopus, Bovine, X. tropicalis)
Host:	Rabbit
Isotype:	IgG
Clonality:	Polyclonal
Immunogen:	Synthetic peptide corresponding to a region within amino acids 976 and 1038 of Importin 7 (Uniprot ID#O95373)
Formulation:	1XPBS, 10% Glycerol (pH7). 0.01% Thimerosal was added as a preservative.
Concentration:	lot specific
Purification:	Purified by antigen-affinity chromatography.
Conjugation:	Unconjugated
Storage:	Store at -20°C as received.
Stability:	Stable for 12 months from date of receipt.
Predicted Protein Size:	120 kDa
Gene Name:	importin 7
Database Link:	NP_006382 Entrez Gene 233726 Mouse Entrez Gene 308939 Rat Entrez Gene 10527 Human O95373



[View online »](#)

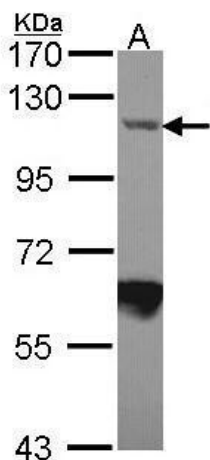
Background: The importin-alpha/beta complex and the GTPase Ran mediate nuclear import of proteins with a classical nuclear localization signal. The protein encoded by this gene is a member of a class of approximately 20 potential Ran targets that share a sequence motif related to the Ran-binding site of importin-beta. Similar to importin-beta, this protein prevents the activation of Ran's GTPase by RanGAP1 and inhibits nucleotide exchange on RanGTP, and also binds directly to nuclear pore complexes where it competes for binding sites with importin-beta and transportin. This protein has a Ran-dependent transport cycle and it can cross the nuclear envelope rapidly and in both directions. At least four importin beta-like transport receptors, namely importin beta itself, transportin, RanBP5 and RanBP7, directly bind and import ribosomal proteins. [provided by RefSeq]

Synonyms: Imp7; RANBP7

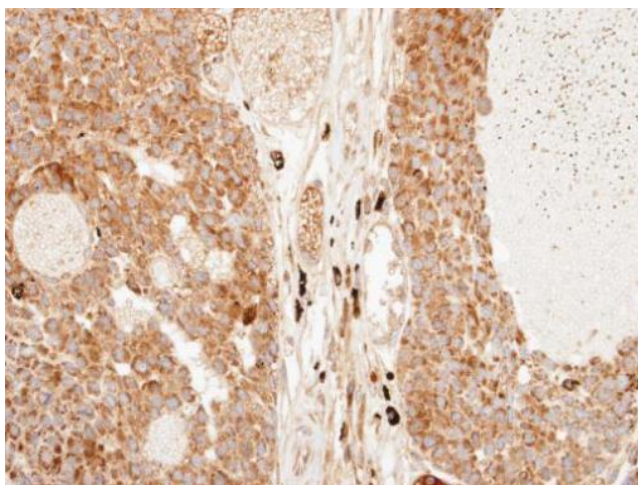
Note: Seq homology of immunogen across species: Mouse (100%), Rat (100%), Zebrafish (92%), Xenopus laevis (85%), Xenopus Tropicalis (92%), Bovine (100%)

Protein Families: Druggable Genome

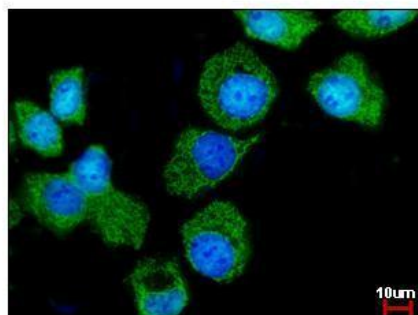
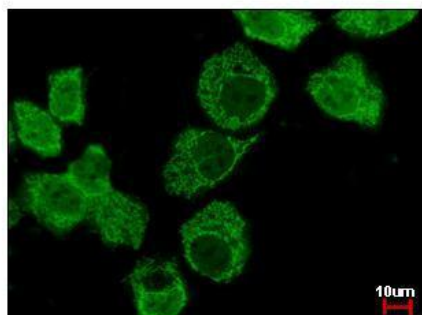
Product images:



Sample (30 ug of whole cell lysate). A: JurKat.
7.5% SDS PAGE. TA308330 diluted at 1:1000.



Immunohistochemical analysis of paraffin-embedded Huh7 xenograft, using Importin 7 (TA308330) antibody at 1:100 dilution.



Importin 7 antibody [C3], C-term detects IPO7 protein at cytoplasm by immunofluorescent analysis. Sample: A431 cells were fixed in 4% paraformaldehyde at RT for 15 min. Green: IPO7 protein stained by Importin 7 antibody [C3], C-term (TA308330) diluted at