

Product datasheet for **TA308328**

CDC37L1 Rabbit Polyclonal Antibody

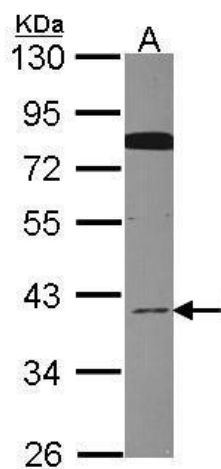
Product data:

Product Type:	Primary Antibodies
Applications:	WB
Recommended Dilution:	WB:1:500-1:3000
Reactivity:	Human (Predicted: Rhesus Monkey)
Host:	Rabbit
Isotype:	IgG
Clonality:	Polyclonal
Immunogen:	Synthetic peptide corresponding to a region within amino acids 275 and 337 of CDC37L1 (Uniprot ID#Q7L3B6)
Formulation:	0.1M Tris, 0.1M Glycine, 10% Glycerol (pH7). 0.01% Thimerosal was added as a preservative.
Concentration:	lot specific
Purification:	Purified by antigen-affinity chromatography.
Conjugation:	Unconjugated
Storage:	Store at -20°C as received.
Stability:	Stable for 12 months from date of receipt.
Predicted Protein Size:	39 kDa
Gene Name:	cell division cycle 37 like 1
Database Link:	NP_060383 Entrez Gene 55664 Human Q7L3B6
Background:	CDC37L1 is a cytoplasmic phosphoprotein that exists in complex with HSP90 (HSPCA; MIM 140571) as well as several other proteins involved in HSP90-mediated protein folding (Scholz et al., 2001 [PubMed 11413142]). [supplied by OMIM]
Synonyms:	CDC37B; HARC
Note:	Seq homology of immunogen across species: Rhesus Monkey (100%)



[View online »](#)

Product images:



Sample (30 ug of whole cell lysate). A: HeLa. 10% SDS PAGE. TA308328 diluted at 1:1000.