

## Product datasheet for **TA308324**

### Amphiphysin (AMPH) Rabbit Polyclonal Antibody

#### Product data:

Product Type:	Primary Antibodies
Applications:	IHC, WB
Recommended Dilution:	IHC:1:100-1:1000; WB:1:500-1:3000
Reactivity:	Human (Predicted: Pig, Bovine)
Host:	Rabbit
Isotype:	IgG
Clonality:	Polyclonal
Immunogen:	Recombinant fragment corresponding to a region within amino acids 1 and 194 of Amphiphysin (Uniprot ID#P49418)
Formulation:	0.1M Tris, 0.1M Glycine, 10% Glycerol (pH7). 0.01% Thimerosal was added as a preservative.
Concentration:	lot specific
Purification:	Purified by antigen-affinity chromatography.
Conjugation:	Unconjugated
Storage:	Store at -20°C as received.
Stability:	Stable for 12 months from date of receipt.
Predicted Protein Size:	76 kDa
Gene Name:	amphiphysin
Database Link:	<a href="#">NP_647477</a> <a href="#">Entrez Gene 273 Human P49418</a>
Background:	This gene encodes a protein associated with the cytoplasmic surface of synaptic vesicles. A subset of patients with stiff-man syndrome who were also affected by breast cancer are positive for autoantibodies against this protein. Alternate splicing of this gene results in two transcript variants encoding different isoforms. Additional splice variants have been described, but their full length sequences have not been determined. [provided by RefSeq]
Synonyms:	AMPH1
Note:	Seq homology of immunogen across species: Pig (100%), Bovine (100%)

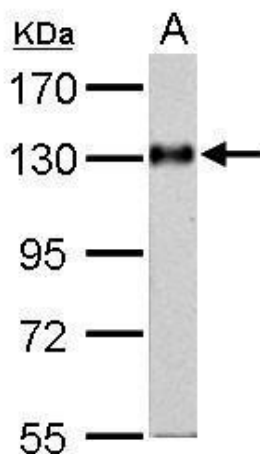


[View online »](#)

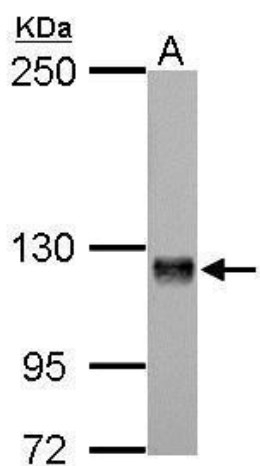
Protein Families: Secreted Protein

Protein Pathways: Fc gamma R-mediated phagocytosis

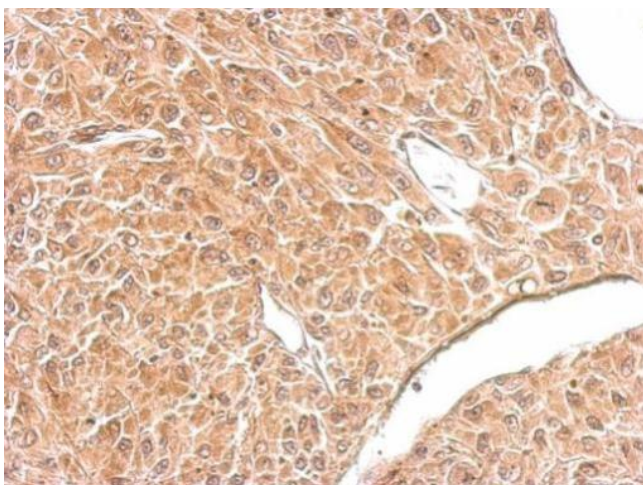
### Product images:



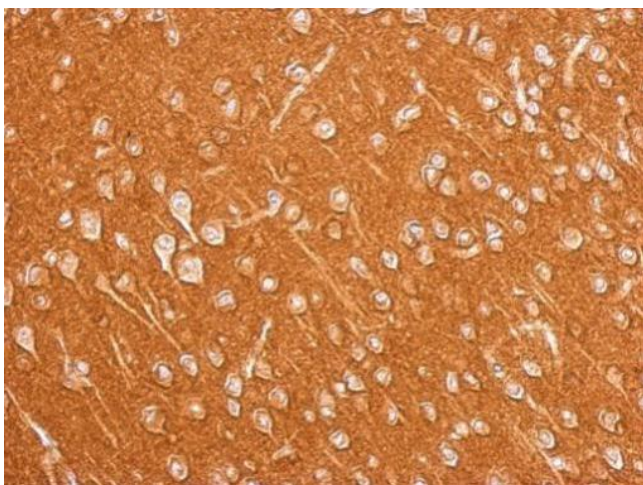
Amphiphysin antibody [N1N2], N-term detects AMPH protein by Western blot analysis. A. 50 ug mouse brain lysate/extract. 7.5 % SDS-PAGE. Amphiphysin antibody [N1N2], N-term (TA308324) dilution: 1:1000



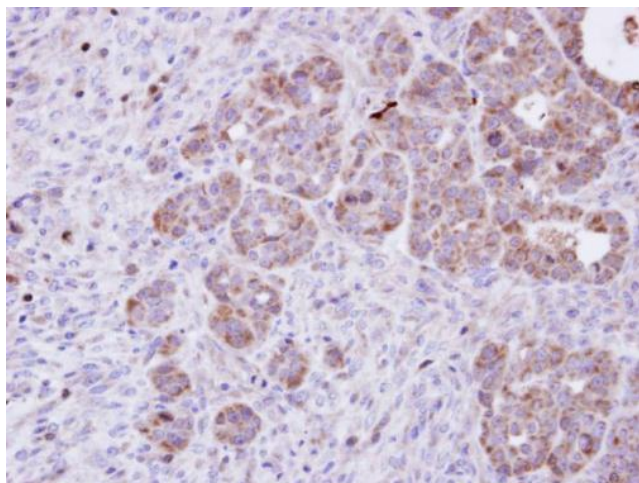
Amphiphysin antibody [N1N2], N-term detects AMPH protein by Western blot analysis. A. 50 ug rat brain lysate/extract. 5 % SDS-PAGE. Amphiphysin antibody [N1N2], N-term (TA308324) dilution: 1:500



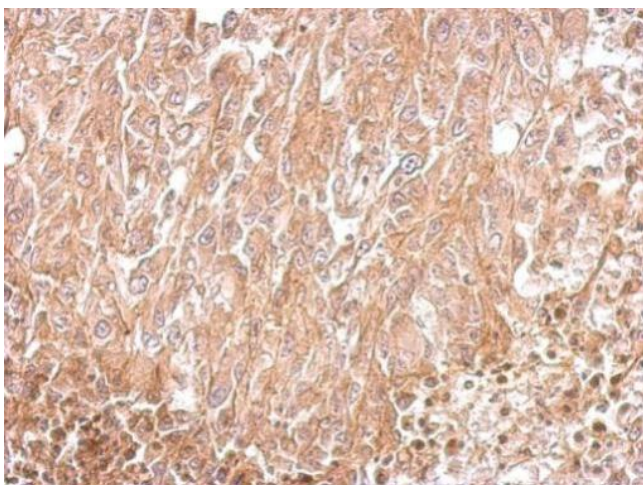
Amphiphysin antibody [N1N2], N-term detects AMPH protein at cytosol on U87 xenograft by immunohistochemical analysis. Sample: Paraffin-embedded U87 xenograft. Amphiphysin antibody [N1N2], N-term (TA308324) dilution: 1:500.



Amphiphysin antibody [N1N2], N-term detects AMPH protein at cytosol on mouse brain by immunohistochemical analysis. Sample: Paraffin-embedded mouse brain. Amphiphysin antibody [N1N2], N-term (TA308324) dilution: 1:500.



Immunohistochemical analysis of paraffin-embedded NCIN87 xenograft, using Amphiphysin (TA308324) antibody at 1:100 dilution.



Amphiphysin antibody [N1N2], N-term detects AMPH protein at cytosol on RT2 xenograft by immunohistochemical analysis. Sample: Paraffin-embedded RT2 xenograft. Amphiphysin antibody [N1N2], N-term (TA308324) dilution: 1:500.