

## Product datasheet for **TA308322**

### GPRC6A Rabbit Polyclonal Antibody

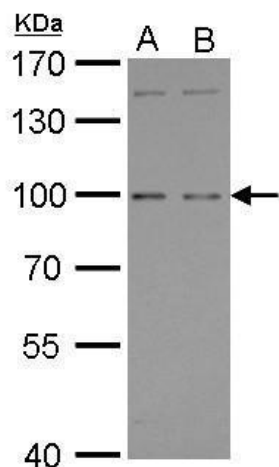
#### Product data:

Product Type:	Primary Antibodies
Applications:	WB
Recommended Dilution:	WB:1:500-1:3000
Reactivity:	Human
Host:	Rabbit
Isotype:	IgG
Clonality:	Polyclonal
Immunogen:	Synthetic peptide corresponding to a region within amino acids 862 and 926 of GPRC6A (Uniprot ID#Q5T6X5)
Formulation:	0.1M Tris, 0.1M Glycine, 10% Glycerol (pH7). 0.01% Thimerosal was added as a preservative.
Concentration:	lot specific
Purification:	Purified by antigen-affinity chromatography.
Conjugation:	Unconjugated
Storage:	Store at -20°C as received.
Stability:	Stable for 12 months from date of receipt.
Predicted Protein Size:	105 kDa
Gene Name:	G protein-coupled receptor class C group 6 member A
Database Link:	<a href="#">NP_683766</a> <a href="#">Entrez Gene 222545 Human</a> <a href="#">Q5T6X5</a>
Synonyms:	bA86F4.3; GPCR
Protein Families:	Druggable Genome, Transmembrane



[View online »](#)

## Product images:



GPRC6A antibody [C3], C-term detects GPRC6A protein by Western blot analysis. A. 30 ug Raji whole cell lysate/extract. B. 30 ug K562 whole cell lysate/extract. 7.5 % SDS-PAGE. GPRC6A antibody [C3], C-term (TA308322) dilution: 1:500