

Product datasheet for **TA308318**

Scramblase 1 (PLSCR1) Rabbit Polyclonal Antibody

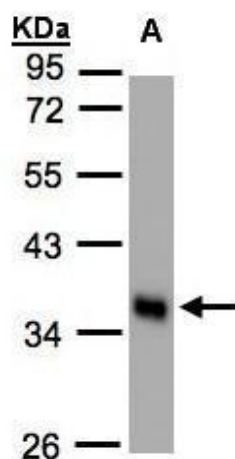
Product data:

Product Type:	Primary Antibodies
Applications:	IF, IHC, WB
Recommended Dilution:	ICC/IF:1:100-1:1000; IHC:1:100-1:1000; WB:1:500-1:3000
Reactivity:	Human
Host:	Rabbit
Isotype:	IgG
Clonality:	Polyclonal
Immunogen:	Recombinant fragment corresponding to a region within amino acids 1 and 286 of Scramblase1 (Uniprot ID#O15162)
Formulation:	0.1M Tris, 0.1M Glycine, 10% Glycerol (pH7). 0.01% Thimerosal was added as a preservative.
Purification:	Purified by antigen-affinity chromatography.
Conjugation:	Unconjugated
Storage:	Store at -20°C as received.
Stability:	Stable for 12 months from date of receipt.
Predicted Protein Size:	35 kDa
Gene Name:	phospholipid scramblase 1
Database Link:	NP_066928 Entrez Gene 5359 Human O15162
Synonyms:	MMTRA1B
Protein Families:	Druggable Genome, Stem cell - Pluripotency

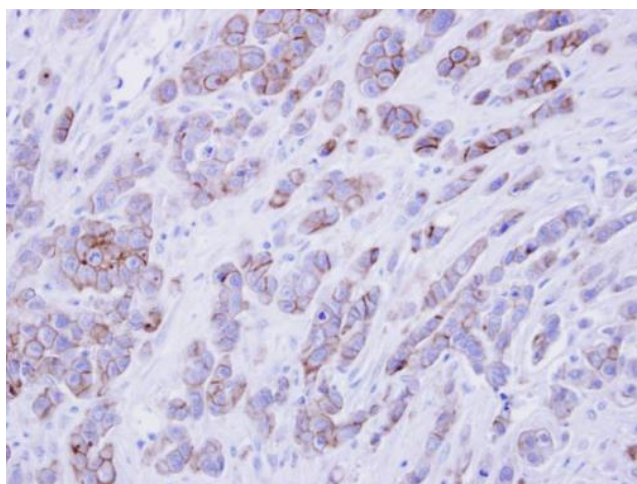


[View online »](#)

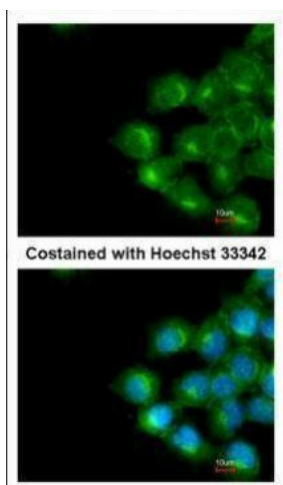
Product images:



Sample (30 ug whole cell lysate). A: HeLa S3. 10% SDS PAGE. TA308318 diluted at 1:1000



Immunohistochemical analysis of paraffin-embedded MDAMB468 xenograft, using phospholipid scramblase 1 (TA308318) antibody at 1:500 dilution.



Immunofluorescence analysis of methanol-fixed A431, using Scramblase1 (TA308318) antibody at 1:200 dilution.